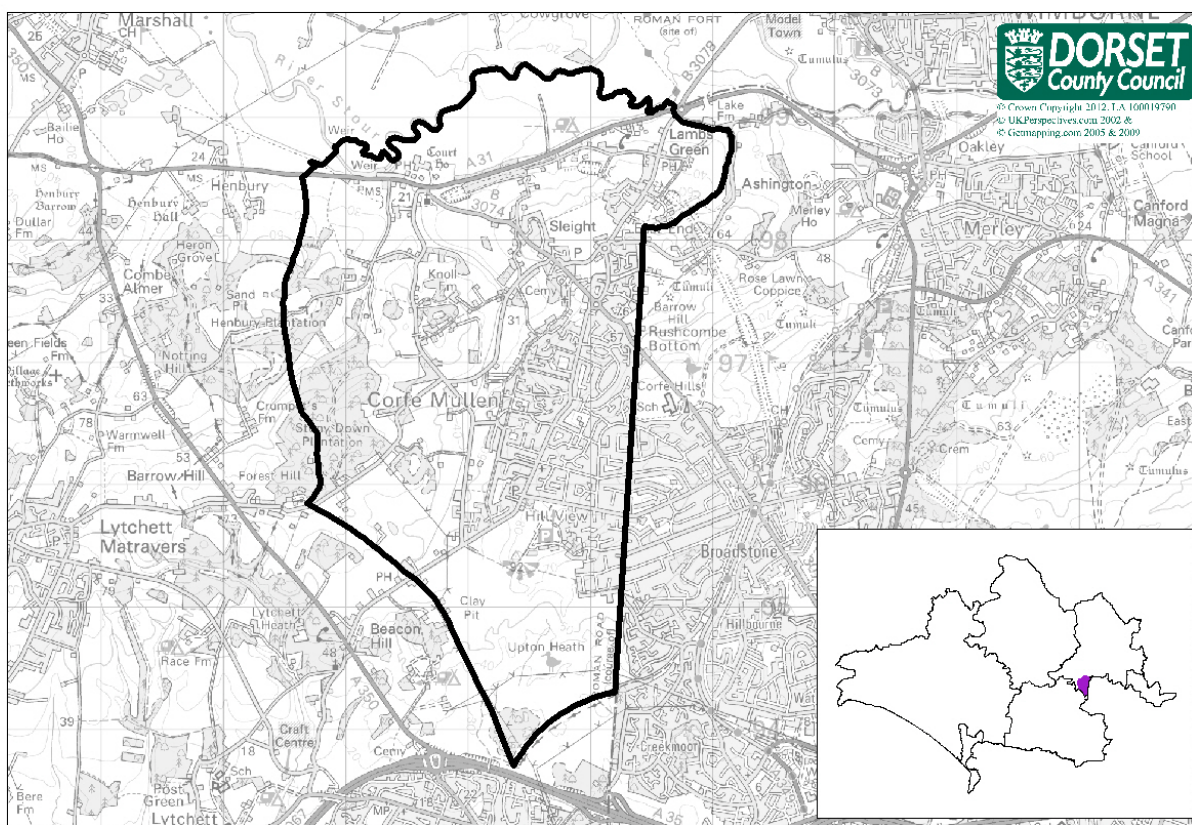


# Electoral Division Profile 2013



## Corfe Mullen Electoral Division

Total Population: **10,130** (2011 Mid Year Estimate, DCC)

Number of Electors: **8,182** (Dec 2012, EDDC)

- Corfe Mullen Electoral Division is composed of the following wards: Corfe Mullen Central, Corfe Mullen North and Corfe Mullen South.
- Within the division there is 1 library and 3 schools (2 primary and 1 middle).

## Population

2011 Mid-Year Population Estimates, ONS & DCC	Corfe Mullen Electoral Division	East Dorset	Dorset (DCC)
All	10,130	87,170	412,910
% aged 0-15 years	18.8%	15.6%	16.3%
% aged 16-64 years	61.6%	56.5%	58.5%
% aged 65-84 years	17.4%	23.5%	21.3%
% aged 85+ years	2.3%	4.4%	3.9%

- Corfe Mullen division has a total population of 10,130 making it one of the larger divisions in the County.
- The age profile in this division is younger than the County average, just 19.7% are aged 65+ years compared with 25.2% across Dorset.

## Ethnicity/Country of Birth

<i>Census, 2011</i>	Corfe Mullen Electoral Division	East Dorset	Dorset (DCC)
% white British	96.8	96.2	95.5
% Black and minority ethnic groups (BME)	3.2	3.8	4.5
% England	92.6	91.8	91.0
% born rest of UK	3.1	3.3	3.4
% Rep of IRE	0.3	0.4	0.4
% EU (member countries in 2001)	1.0	1.2	1.3
% EU (Accession countries April 2001 to March 2011)	0.5	0.4	0.7
% born elsewhere	2.5	2.9	3.1

- 3.2% of the population in Corfe Mullen ED are from black or minority ethnic groups, below the County average (4.5%).

## Households

<i>Census, 2011</i>	Corfe Mullen Electoral Division	East Dorset	Dorset (DCC)
all household spaces	4,150	38,980	195,060
% household spaces with no usual residents	1.7	3.8	8.2
all household spaces with residents	4,080	37,560	180,210
% owner occupied	84.4	81.1	72.7
% rented (public)	6.4	8.3	12.4
% rented (private) & others	9.2	10.5	14.9
% no cars	7.2	10.3	15.5
% 2 or more cars	55.5	50.1	41.0
% of households 65+ (couples or lone, with/without dependents)	24.6	33.6	30.6
% married couples with/without dependents	42.8	38.0	35.1
% cohabiting couples with/without dependents	7.3	7.0	8.4
% lone parents with/dependents	9.4	7.0	7.6
% all others	15.9	14.5	18.4
average household size	2.5	2.3	2.3

- Corfe Mullen has a low proportion of both vacant properties and second/holiday homes. Overall 98.3% of dwelling have permanent residents.
- Over 84% of households in the division are owner occupied, significantly higher than the County average (73%).
- Car ownership is also high, just 7.2% households do not have a car.

## Health and Care

<i>Census, 2011</i>	Corfe Mullen Electoral Division	East Dorset	Dorset (DCC)
% long term illness/disability	14.6	19.7	20.1
% health very good/good	85.2	81.1	80.5
% health very bad/bad	3.4	4.6	5.0
% provides unpaid care	12.4	12.5	11.9
% all usual residents in communal establishments	0.1	1.1	2.3

- Overall the health of those living in Corfe Mullen is better than the County average, this is partly due to the younger age profile in the area.
- Less than 15% have a long term illness or disability, compared with over 20% across Dorset.

## Employment and Qualifications

<i>Census, 2011</i>	<b>Corfe Mullen Electoral Division</b>	East Dorset	Dorset (DCC)
all usual residents aged 16 to 74	7,330	61,050	293,440
all usual residents aged 16 to 74 economically active	5,350	41,580	199,940
% part-time	24.4	23.2	23.1
% full-time	52.8	51.2	51.0
% self-employed	15.2	18.4	18.4
% unemployed	3.2	3.1	4.0
all usual residents aged 16 to 74 economically inactive	1,980	19,470	93,500
% retired	66.3	69.3	63.6
% student	10.3	8.3	10.0
% looking after home/family	12.1	11.5	11.3
% sick/disabled	6.8	7.0	9.7
% other	4.6	3.9	5.4
all usual residents aged 16 and over	8,230	73,560	345,600
% of all usual residents aged 16 and over no qualifications	16.0	21.5	21.3
% of all usual residents aged 16 and over with higher level qualifications	28.8	27.7	27.0
all usual residents aged 16 to 74 in employment	5,140	40,050	190,900
% high skill occupation	42.0	43.6	40.0
% intermediate skill occupation	45.4	42.6	43.4
% low skill occupation	12.6	13.8	16.6

- Of those who are economically active, almost 53% are in full-time employment. Just 15.2% are self-employed, lower than the County average of 18.4%.
- Almost 7% of those who are economically inactive are permanently sick/disabled, lower than the County average (9.7%).
- Just 16% of those aged 16+ in Corfe Mullen do not have any qualifications, across Dorset the figure is 21.3%.
- Corfe Mullen has a low proportion employed in low skill occupations, 12.6% compared with 16.6% across Dorset.

## Index of Deprivation 2010, CLG

Lower Super Output Area	IMD Rank
Corfe Mullen Henbury	30,970
Corfe Mullen Central	31,116
Corfe Mullen Phelipps	29,704
Corfe Mullen Newtown & Environs	27,942
Corfe Mullen North	29,741
Corfe Mullen Springdale	31,146
Corfe Mullen West & Environs	25,023

- IMD Stands for the Index of Multiple Deprivation
- All Lower Super Output Areas in England are ranked from 1 for the most deprived to 32,482 for the least deprived
- None of the LSOAs in the area are deprived

## MOSAIC socio-economic classifications, 2012

Rank	Corfe Mullen ED Top 5 Mosaic Public Sector Types	Corfe Mullen ED %	Dorset CC %
1	Better off empty nesters in low density estates on town fringes	15.2	6.8
2	Older people living in large houses in mature suburbs	10.4	4.8
3	Well off commuters living in spacious houses in semi rural settings	9.2	4.0
4	Empty nester owner occupiers making little use of public services	9.1	3.0
5	Middle aged families living in less fashionable inter war suburban semis	7.6	1.1

# Electoral Division Profile 2013

## Average House Prices

Postcode District	Detached Sales	Semi-Det Sales	Terraced Sales	Flat/Mais Sales	Overall Average	Total
<b>Corfe Mullen ED BH21</b>	<b>£338,967 71</b>	<b>£250,433 15</b>	<b>£201,597 20</b>	<b>£143,787 12</b>	<b>£284,581</b>	<b>118</b>
Dorset	£343,117 689	£233,079 304	£196,327 413	£162,160 220	£260,776	1,626
England & Wales	£324,602 43,260	£201,427 47,961	£196,327 50,491	£243,379 30,131	£238,293	171,843

Source: HM Land Registry, based on sales October–December 2012

## Citizens' Panel Questions—March 2011

Questions —Corfe Mullen ED	Yes	No	Net Agreement
Do you feel that you can influence decisions made by Dorset County Council?	<b>22%</b>	<b>44%</b>	-22%
Do you feel informed about Dorset County Council?	<b>62%</b>	<b>27%</b>	36%
Do you agree that Dorset County Council offer value for money?	<b>42%</b>	<b>22%</b>	20%

## Council Tax—2012/13

	Corfe Mullen	Notes
Band D	£1,653.61	

## Earnings — median weekly earnings of full-time employees

	Workplace based	Residence based
<b>DCC Dorset</b>	<b>£458.50</b>	<b>£480.00</b>
Christchurch	£477.40	£486.20
<b>East Dorset</b>	<b>£458.50</b>	<b>£518.10</b>
North Dorset	£379.90	£479.80
Purbeck	£484.60	£439.50
West Dorset	£452.70	£506.30
Weymouth & Portland	£437.50	£449.10

Source: Annual Survey of Hours and Earnings 2012, ONS

## Crime Rates

Area	Rate of total crime per 1,000 population
<b>Corfe Mullen ED</b>	<b>22.3</b>
DCC Dorset	45.7
South West Region	61.2
England & Wales	72.0

Sources: Dorset County Council, Dorset Police & ONS. For further detail contact 01305 224984

## Unemployment Source: Claimant Count, Jan-Dec 2012, ONS

Area	Male		Female		Total		% of claimants long term unemployed
	number	rate	number	rate	number	rate	
<b>Corfe Mullen ED</b>	<b>41</b>	<b>1.3</b>	<b>31</b>	<b>0.9</b>	<b>72</b>	<b>1.1</b>	<b>11.5</b>
DCC Dorset	2,605	2.2	1,341	1.1	3,946	1.6	12.1
Great Britain	1,011,913	5.1	514,638	2.6	1,526,551	3.8	25.0

## Employment Business Register and Employment Survey 2011, ONS

Area	Employees in employment	% employed in the service sector
<b>Corfe Mullen ED</b>	<b>1,500</b>	<b>82%</b>
DCC Dorset	148,700	81%
Great Britain	26,561,700	85%

Note: Excludes self-employed & agricultural employment

## Firms Source: MINT Database, Jan 2013

Area	Number of firms	% employing 1-10 people (micro firms)
<b>Corfe Mullen ED</b>	<b>360</b>	<b>98%</b>