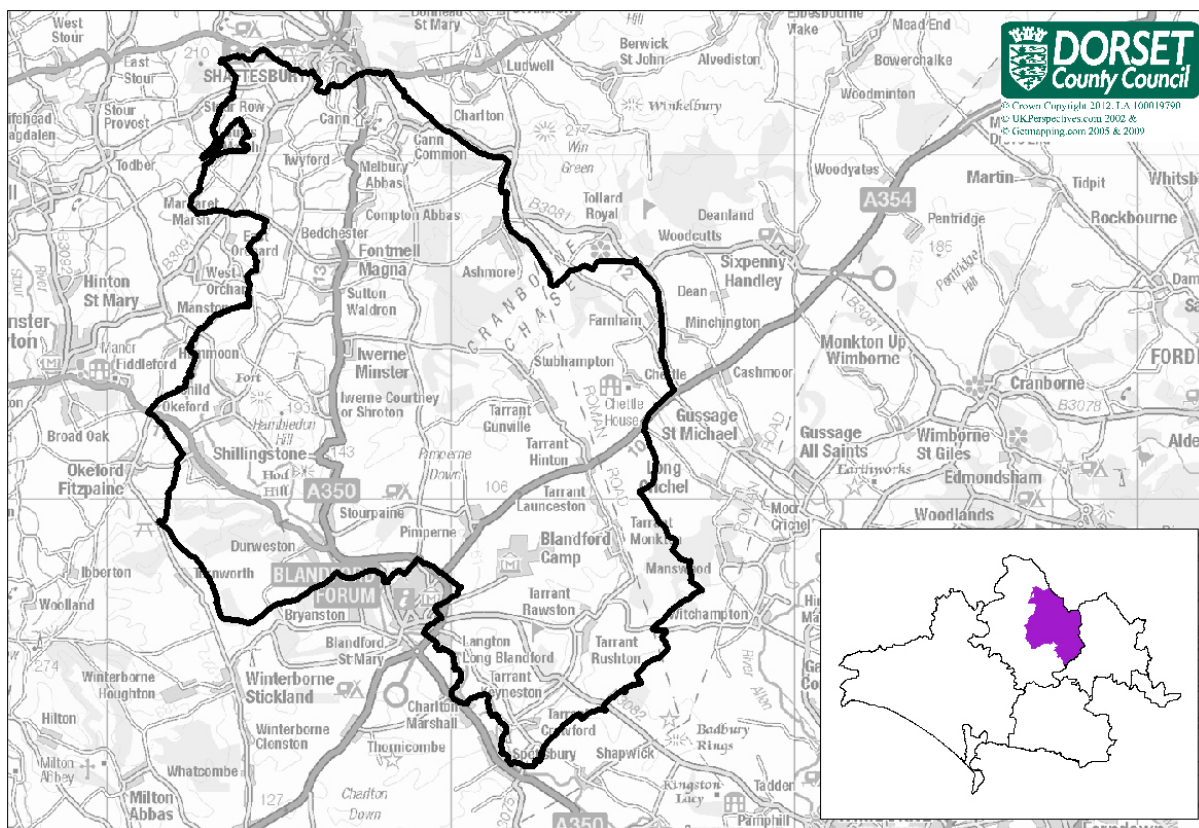


# Electoral Division Profile 2013



## Hambleton Electoral Division

Total Population: **12,390** (2011 Mid Year Estimate, DCC)    Number of Electors: **8,609** (March 2013, NDCC)

- Hambleton Electoral Division is composed of the following parishes: Cann, Melbury Abbas, Compton Abbas, Fontmell Magna, Sutton Waldron, Iwerne Minster, Iwerne Courtney or Shroton, Child Okeford, Hanford, Shillingstone, Durweston, Stourpaine, Iwerne Steepleton, Pimperne, Tarrant Hinton, Tarrant Gunville, Tarrant Crawford, Tarrant Keyneston, Tarrant Rawston, Tarrant Monkton, Tarrant Rushton, Tarrant Launceston, Langton Long Blandford, Chettle, Farnham and Ashmore.
- Within the division there is no library (the nearest libraries are in Blandford or Shaftesbury). There are also 6 schools (all primary).

## Population

2011 Mid-Year Population Estimates, ONS & DCC	Hambleton Electoral Division	North Dorset	Dorset (DCC)
All	12,390	68,580	412,910
% aged 0-15 years	19.1%	18.0%	16.3%
% aged 16-64 years	61.4%	60.4%	58.5%
% aged 65-84 years	16.9%	18.4%	21.3%
% aged 85+ years	2.5%	3.1%	3.9%

- Hambleton division has a total population of 12,390, making it one of the largest divisions in the County.
- The age profile is younger than average with over 19% aged 0-15 years compared with 16% across Dorset, this is partly due to the armed forces base within the division (Blandford Camp).

## Ethnicity/Country of Birth

<i>Census, 2011</i>	Hambleton Electoral Division	North Dorset	Dorset (DCC)
% white British	92.9	94.7	95.5
% Black and minority ethnic groups (BME)	7.1	5.3	4.5
% England	85.8	89.7	91.0
% born rest of UK	5.4	3.4	3.4
% Rep of IRE	0.4	0.3	0.4
% EU (member countries in 2001)	2.2	1.6	1.3
% EU (Accession countries April 2001 to March 2011)	0.8	1.3	0.7
% born elsewhere	5.5	3.6	3.1

- Over 7% of the population are black and minority ethnic groups, whilst almost 9% were born outside of the UK, the County average is just 5.6%.

## Households

<i>Census, 2011</i>	Hambleton Electoral Division	North Dorset	Dorset (DCC)
all household spaces	4,840	30,420	195,060
% household spaces with no usual residents	6.0	6.1	8.2
all household spaces with residents	4,550	28,670	180,210
% owner occupied	66.1	70.5	72.7
% rented (public)	10.9	13.5	12.4
% rented (private) & others	23.0	16.0	14.9
% no cars	6.1	12.0	15.5
% 2 or more cars	52.7	45.9	41.0
% of households 65+ (couples or lone, with/without dependents)	26.6	27.0	30.6
% married couples with/without dependents	46.4	38.3	35.1
% cohabiting couples with/without dependents	6.5	9.1	8.4
% lone parents with/dependents	6.2	7.0	7.6
% all others	14.4	18.6	18.4
average household size	2.7	2.4	2.3

- Two thirds of households are owner occupied, lower than the County average of almost 73%.
- 23% of households are rented privately, significantly higher than the County average (14.9%).
- Car ownership is high in the division, just 6.1% of households do not have a car, the County average is 15.5%.
- The average household size is 2.7, above the County average of 2.3. This is due to the large number of families in the area.

## Health and Care

<i>Census, 2011</i>	Hambleton Electoral Division	North Dorset	Dorset (DCC)
% long term illness/disability	15.3	17.5	20.1
% health very good/good	85.7	83.0	80.5
% health very bad/bad	3.5	4.2	5.0
% provides unpaid care	10.2	10.6	11.9
% all usual residents in communal establishments	12.7	4.4	2.3

- Overall the health of those who live in Hambleton division is better than the County average, partly a reflection of the younger population in the area.
- The division has a very high proportion (12.7%) who are resident in a communal establishment. This division includes the armed forces personnel at Blandford Camp.

## Employment and Qualifications

<i>Census, 2011</i>	Hambleton Electoral Division	North Dorset	Dorset (DCC)
all usual residents aged 16 to 74	8,950	49,140	293,440
all usual residents aged 16 to 74 economically active	6,280	34,880	199,940
% part-time	18.7	20.6	23.1
% full-time	55.8	53.6	51.0
% self-employed	19.7	19.3	18.4
% unemployed	3.7	3.7	4.0
all usual residents aged 16 to 74 economically inactive	2,680	14,260	93,500
% retired	53.9	58.7	63.6
% student	12.2	13.3	10.0
% looking after home/family	14.3	12.7	11.3
% sick/disabled	6.1	9.1	9.7
% other	13.4	6.1	5.4
all usual residents aged 16 and over	10,020	56,230	345,600
% of all usual residents aged 16 and over no qualifications	15.7	20.0	21.3
% of all usual residents aged 16 and over with higher level qualifications	31.0	26.9	27.0
all usual residents aged 16 to 74 in employment	6,030	33,430	190,900
% high skill occupation	51.2	39.1	40.0
% intermediate skill occupation	34.8	41.9	43.4
% low skill occupation	14.0	19.0	16.6

- The majority of the economically active population are employed full-time, 55.8%, above the average for the County. Hambleton has a low proportion who are employed part-time, 18.7% compared with 23.1% across Dorset.
- Just 6.1% of those who are economically inactive are permanently sick/disabled, below the County average (9.7%), but an above average percentage is looking after home/family
- People aged 16+ in Hambleton are generally better qualified than the average across Dorset. 31% have a degree or above and just 15.7% have no qualifications.
- Hambleton has a very high number of people in a high skill occupation, over 51% of those in employment. This is significantly higher than the County average of 40%.

## Index of Deprivation 2010, CLG.

Lower Super Output Area	IMD Rank
Cranborne Chase	19,996
Durweston & Stourpaine	15,747
The Iweres	19,272
Child Okeford & Shillingstone	26,436
The Beacon	19,227
The Lower Tarrants	27,989

- IMD Stands for the Index of Multiple Deprivation
- All Lower Super Output Areas in England are ranked from 1 for the most deprived to 32,482 for the least deprived
- None of the LSOAs in Hambleton are within the top 40% most deprived in England

## MOSAIC socio-economic classifications, 2012

Rank	Hambleton ED Top 5 Mosaic Public Sector Types	Hambleton ED %	Dorset CC %
1	Retirees electing to settle in environmentally attractive localities	19.7	4.3
2	Higher income older champions of village communities	12.3	4.5
3	Personnel reliant on the Ministry of Defence for public services	10.7	0.5
4	Villagers with few well paid alternatives to agricultural employment	10.2	2.9
5	Well off commuters living in spacious houses in semi rural settings	6.3	4.0

# Electoral Division Profile 2013

## Average House Prices

Postcode district	Detached Sales	Semi-Det Sales	Terraced Sales	Flat/Mais Sales	Overall Average	Total
<b>Hambledon ED DT11</b>	<b>£337,947 55</b>	<b>£224,938 26</b>	<b>£165,520 30</b>	<b>£78,720 5</b>	<b>£256,851</b>	<b>116</b>
Dorset	£343,117 689	£233,079 304	£196,327 413	£162,160 220	£260,776	1,626
England & Wales	£324,602 43,260	£201,427 47,961	£196,327 50,491	£243,379 30,131	£238,293	171,843

Source: HM Land Registry, based on sales Oct—Dec 2012

## Citizens' Panel Questions—March 2011

Questions —Hambledon ED	Yes	No	Net Agreement
Do you feel that you can influence decisions made by Dorset County Council?	<b>24%</b>	<b>51%</b>	-27%
Do you feel informed about Dorset County Council?	<b>50%</b>	<b>24%</b>	26%
Do you agree that Dorset County Council offer value for money?	<b>31%</b>	<b>37%</b>	-6%

## Council Tax—2012/13

	Lowest *	Highest **	Notes
Band D	£1,513.46	£1,573.26	*Chettle, Hanford, Langton Long. **Stourpaine

## Earnings — median weekly earnings of full time employees

	Workplace based	Residence based
<b>DCC Dorset</b>	<b>£458.50</b>	<b>£480.00</b>
Christchurch	£477.40	£486.20
East Dorset	£458.50	£518.10
<b>North Dorset</b>	<b>£379.90</b>	<b>£479.80</b>
Purbeck	£484.60	£439.50
West Dorset	£452.70	£506.30
Weymouth & Portland	£437.50	£449.10

Source: Annual Survey of Hours and Earnings 2012, ONS

## Crime Rates

Area	Rate of total crime per 1,000 population
<b>Hambledon ED</b>	<b>28.7</b>
DCC Dorset	45.7
South West Region	61.2
England & Wales	72.0

Sources: Dorset County Council, Dorset Police & ONS. For further detail contact 01305 224984

## Unemployment Source: Claimant Count, Jan-Dec 2012, ONS

Area	Male		Female		Total		% of claimants long term unemployed
	number	rate	number	rate	number	rate	
<b>Hambledon ED</b>	<b>33</b>	<b>0.7</b>	<b>26</b>	<b>0.8</b>	<b>58</b>	<b>0.8</b>	<b>6.4</b>
DCC Dorset	2,605	2.2	1,341	1.1	3,946	1.6	12.1
Great Britain	1,011,913	5.1	514,638	2.6	1,526,551	3.8	25.0

## Employment Business Register and Employment Survey 2011, ONS

Area	Employees in employment	% employed in the service sector
<b>Hambledon ED</b>	<b>4,400</b>	<b>90%</b>
DCC Dorset	148,700	81%
Great Britain	26,561,700	85%

Note: Excludes self-employed & agricultural employment

## Firms Source: MINT Database, Jan 2013

Area	Number of firms	% employing 1-10 people (micro firms)
<b>Hambledon ED</b>	<b>710</b>	<b>97%</b>