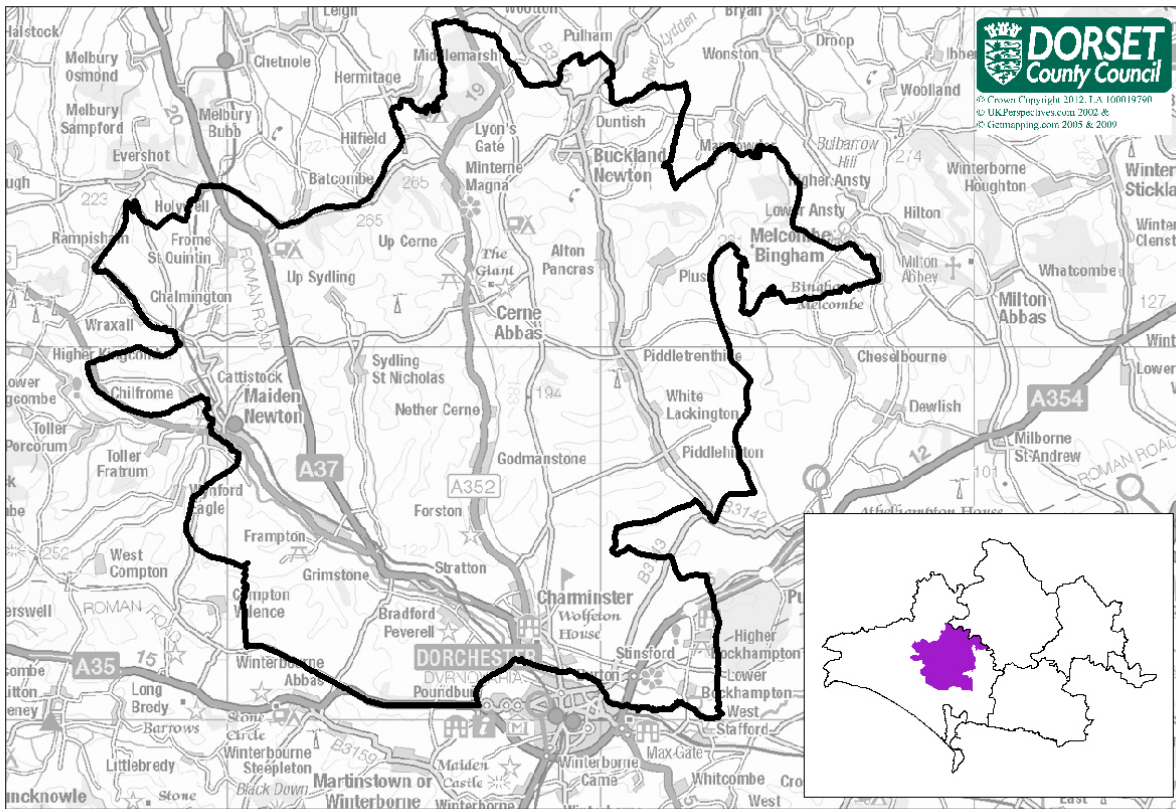


# Electoral Division Profile 2013



## Three Valleys Electoral Division

Total Population: **10,090** (2011 Mid Year Estimate, DCC)      Number of Electors: **8,415** (Dec 2012, WDDC)

- Three Valleys Electoral Division is composed of the following parishes: Buckland Newton, Alton Pancras, Piddletrenthide, Melcombe Horsey, Piddlehinton, Stinsford, Charminster, Godmanstone, Nether Cerne, Cerne Abbas, Up Cerne, Minterne Magna, Chilfrone, Cattistock, Frome St Quintin, Sydling St Nicholas, Maiden Newton, Frampton, Stratton and Bradford Peverell.
- Within the division there is no library (the nearest is in Dorchester) There area also 4 schools (all primary).

## Population

2011 Mid-Year Population Estimates, ONS & DCC	Three Valleys Electoral Division	West Dorset	Dorset (DCC)
All	10,090	99,260	412,910
% aged 0-15 years	17.1%	15.8%	16.3%
% aged 16-64 years	59.2%	57.7%	58.5%
% aged 65-84 years	20.5%	22.3%	21.3%
% aged 85+ years	3.1%	4.2%	3.9%

- The population of Three Valleys division is 10,090.
- The age profile in the division is typical of the County, almost 24% are aged 65+ years and 17.1% are aged 0-15 years.

## Ethnicity/Country of Birth

<i>Census, 2011</i>	Three Valleys Electoral Division	West Dorset	Dorset (DCC)
% white British	96.2	95.7	95.5
% Black and minority ethnic groups (BME)	3.8	4.3	4.5
% England	91.5	91.3	91.0
% born rest of UK	3.4	3.1	3.4
% Rep of IRE	0.3	0.4	0.4
% EU (member countries in 2001)	1.2	1.2	1.3
% EU (Accession countries April 2001 to March 2011)	0.5	0.5	0.7
% born elsewhere	3.0	3.4	3.1

- 96.2% of the population are white British, slightly higher than the County average (95.5%).

## Households

<i>Census 2011</i>	Three Valleys Electoral Division	West Dorset	Dorset (DCC)
all household spaces	4,740	49,340	195,060
% household spaces with no usual residents	7.9	11.2	8.2
all household spaces with residents	4,370	44,390	180,210
% owner occupied	71.5	70.3	72.7
% rented (public)	11.8	13.9	12.4
% rented (private) & others	16.6	15.8	14.9
% no cars	8.3	15.7	15.5
% 2 or more cars	51.4	39.4	41.0
% of households 65+ (couples or lone, with/without dependents)	27.3	31.4	30.6
% married couples with/without dependents	40.3	34.3	35.1
% cohabiting couples with/without dependents	8.4	8.2	8.4
% lone parents with/without dependents	5.8	7.0	7.6
% all others	18.3	18.9	18.4
average household size	2.3	2.2	2.3

- Almost 17% of households in the division are privately rented, the County average is 14.9%.
- Car ownership is high; just 8.3% of households do not have a car, whilst over 51% have at least 2 cars, much higher than the County average of 41%.
- The greatest part of households are married couples (with/without dependents), 40% compared with 35% across Dorset.

## Health and Care

<i>Census, 2011</i>	Three Valleys Electoral Division	West Dorset	Dorset (DCC)
% long term illness /disability	17.1	20.3	20.1
% health very good/good	83.1	80.3	80.5
% health very bad/bad	4.1	5.0	5.0
% provides unpaid care	11.8	12.0	11.9
% all usual residents in communal establishments	1.0	2.7	2.3

- Overall, the health of those who live in the division is better than the County average.
- 17% of the division's population has a long term illness or disability, the County average is 20.1%.
- Over 83% of residents said their health was good/very good.

## Employment and Qualifications

<i>Census, 2011</i>	Three Valleys Electoral Division	West Dorset	Dorset (DCC)
all usual residents aged 16 to 74	7,270	70,360	293,440
all usual residents aged 16 to 74 economically active	5,120	47,570	199,940
% part-time	21.8	23.0	23.1
% full-time	49.7	48.6	51.0
% self-employed	22.8	21.5	18.4
% unemployed	2.6	3.4	4.0
all usual residents aged 16 to 74 economically inactive	2,160	22,790	93,500
% retired	67.1	65.4	63.6
% student	9.9	10.4	10.0
% looking after home/family	12.9	10.6	11.3
% sick/disabled	6.5	9.1	9.7
% other	3.4	4.5	5.4
all usual residents aged 16 and over	8,360	83,540	345,600
% of all usual residents aged 16 and over no qualifications	15.9	20.1	21.3
% of all usual residents aged 16 and over with higher level qualifications	36.1	30.8	27.0
all usual residents aged 16 to 74 in employment	4,960	45,710	190,900
% high skill occupation	45.8	40.8	40.0
% intermediate skill occupation	40.3	43.1	43.4
% low skill occupation	14.0	16.1	16.6

- Of those who are economically active, almost half are employed full-time and 22% are employed part-time. The division has a high proportion of self-employed, 23% compared with 18.4% across Dorset.
- Unemployment is lower than average, 2.6% of the economically active population. The County average is 4%.
- Just under 16% those aged 16+ in the division have no qualifications, this is lower than average for the County (21.3%). Over 36% have a higher level qualification (degree or above), above the County average (27%).
- Almost 46% of those in employment have a high skill occupation.

## Index of Deprivation 2010, CLG

Lower Super Output Area	IMD Rank
Cerne Valley	20,053
Charminster	17,817
Frome Valley	17,060
Maiden Newton	18,364
Piddle Valley	17,717

- IMD Stands for the Index of Multiple Deprivation
- All Lower Super Output Areas in England are ranked from 1 for the most deprived to 32,482 for the least deprived
- None of the LSOAs in the Three Valleys are within the top 40% most deprived in England

## MOSAIC socio-economic classifications, 2012

Rank	Three Valleys ED Top 5 Mosaic Public Sector Types	Three Valleys ED%	Dorset CC %
1	Higher income older champions of village communities	13.6	4.5
2	Remote communities with poor access to public and commercial services	12.2	3.5
3	Retirees electing to settle in environmentally attractive localities	11.6	4.3
4	Villagers with few well paid alternatives to agricultural employment	10.0	2.9
5	Residents in retirement, second home and tourist communities	5.9	5.8

# Electoral Division Profile 2013

## Average House Prices

Postcode division	Detached	Sales	Semi-Det	Sales	Terraced	Sales	Flat/Mais	Sales	Overall Average	Total
<b>Three Valleys ED DT2</b>	<b>£362,189</b>	<b>37</b>	<b>£235,243</b>	<b>15</b>	<b>£211,887</b>	<b>36</b>	<b>£192,125</b>	<b>4</b>	<b>£275,283</b>	<b>92</b>
Dorset	£343,117	689	£233,079	304	£196,327	413	£162,160	220	£260,776	1,626
England & Wales	£324,602	43,260	£201,427	47,961	£196,327	50,491	£243,379	30,131	£238,293	171,843

Source: HM Land Registry, based on sales October-December 2012

## Citizens' Panel Questions—March 2011

Questions —Three Valleys ED	Yes	No	Net Agreement
Do you feel that you can influence decisions made by Dorset County Council?	<b>23%</b>	<b>58%</b>	-35%
Do you feel informed about Dorset County Council?	<b>58%</b>	<b>21%</b>	37%
Do you agree that Dorset County Council offer value for money?	<b>40%</b>	<b>26%</b>	14%

## Council Tax—2012/13

	Lowest *	Highest **	Notes
Band D	£1,543.43	£1,576.05	*Minterne Magna. **Maiden Newton

## Earnings — median weekly earnings of full time employees

	Workplace based	Residence based
<b>DCC Dorset</b>	<b>£458.50</b>	<b>£480.00</b>
Christchurch	£477.40	£486.20
East Dorset	£458.50	£518.10
North Dorset	£379.90	£479.80
Purbeck	£484.60	£439.50
<b>West Dorset</b>	<b>£452.70</b>	<b>£506.30</b>
Weymouth & Portland	£437.50	£449.10

Source: Annual Survey of Hours and Earnings 2012, ONS

## Crime Rates

Area	Rate of total crime per 1,000 population
<b>Three Valleys ED</b>	<b>26.3</b>
DCC Dorset	45.7
South West Region	61.2
England & Wales	72.0

Sources: Dorset County Council, Dorset Police & ONS. For further detail contact 01305 224984

## Unemployment Source: Claimant Count, Jan-Dec 2012, ONS

Area	Male		Female		Total		% of claimants long term unemployed
	number	rate	number	rate	number	rate	
<b>Three Valleys ED</b>	<b>37</b>	<b>1.4</b>	<b>21</b>	<b>0.7</b>	<b>58</b>	<b>1.1</b>	<b>10.5</b>
DCC Dorset	2,605	2.2	1,341	1.1	3,946	1.6	12.1
Great Britain	1,011,913	5.1	514,638	2.6	1,526,551	3.8	25.0

## Employment Business Register and Employment Survey 2011, ONS

Area	Employees in employment	% employed in the service sector
<b>Three Valleys ED</b>	<b>2,600</b>	<b>77%</b>
DCC Dorset	148,700	81%
Great Britain	26,561,700	85%

Note: Excludes self-employed & agricultural employment

## Firms Source: MINT Database, Jan 2013

Area	Number of firms	% employing 1-10 people (micro firms)
<b>Three Valleys ED</b>	<b>510</b>	<b>94%</b>