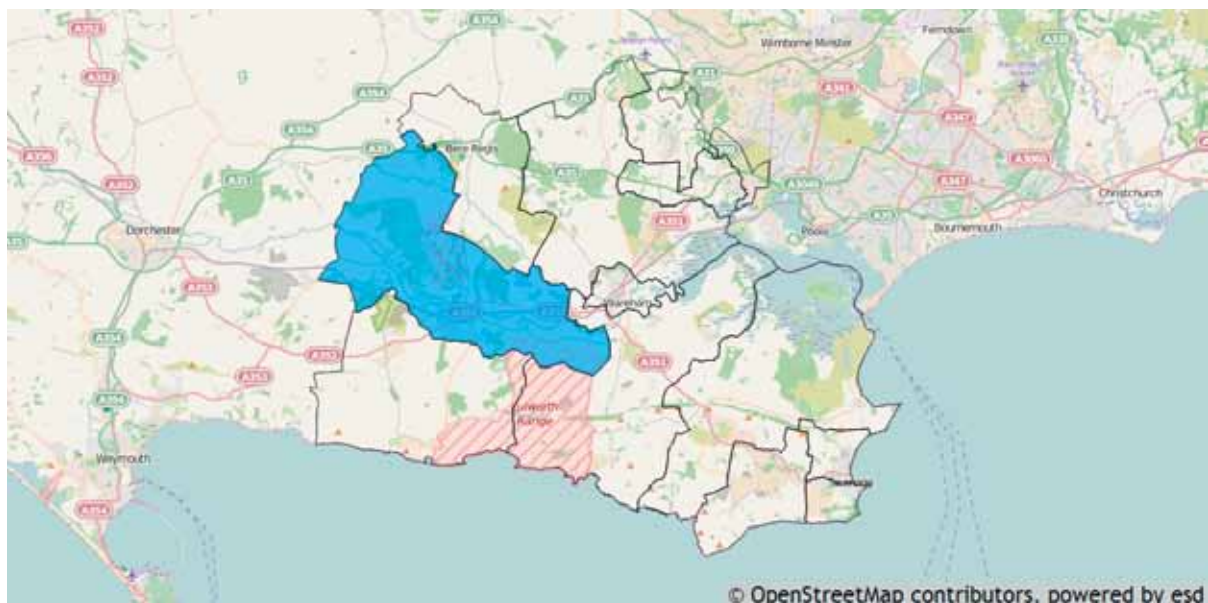


Wool Ward Factsheet

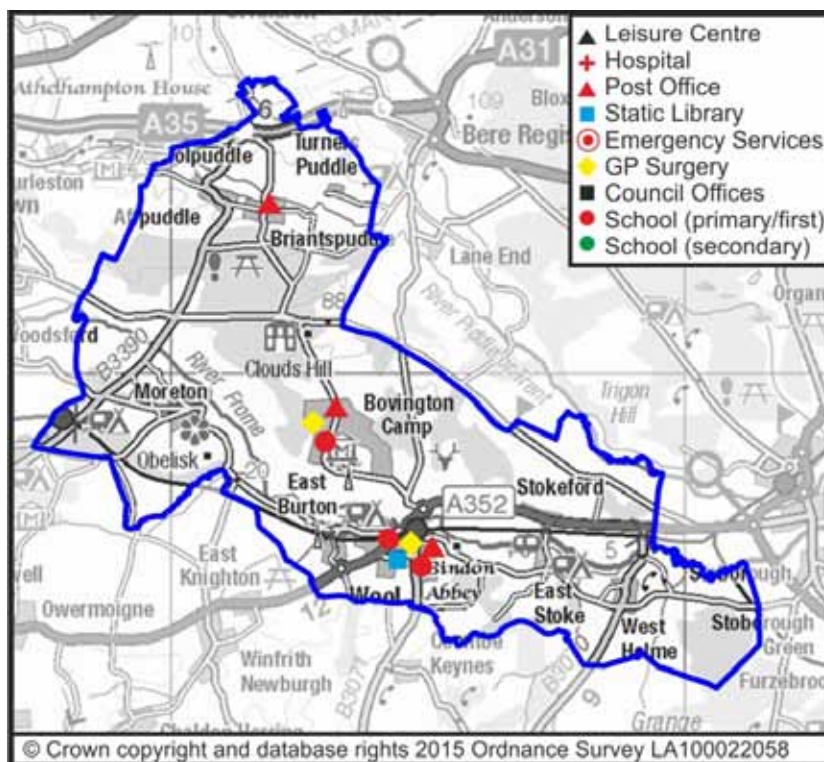
This report provides a summary of the latest available information on the demographic and socio-economic make-up of the Wool Ward within Purbeck. It looks at the population structure and provides information on the economic, housing and educational achievement of the Ward.

Wool is one of the 13 Wards of Purbeck. It has an area of 6,924 hectares which represents 17.12% of the total area of Purbeck District.



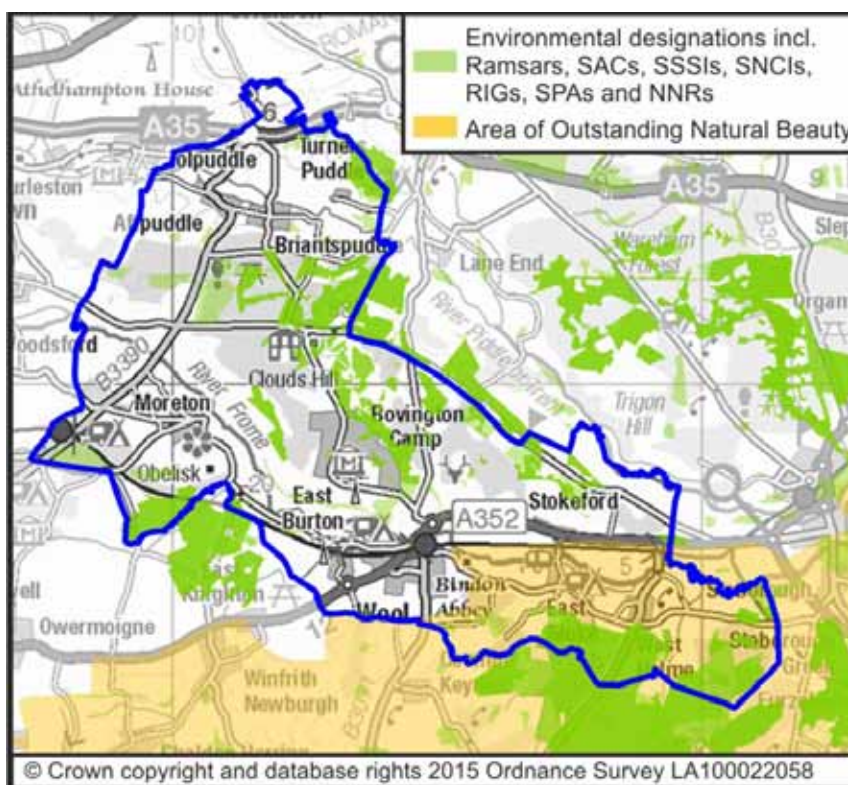
Facilities

The following map shows the main facilities of this Ward.



Environment

Purbeck has a large number of environmental and landscape designations. The following map shows the spatial extent of these designations in this Ward.



People

Wool has a resident population of 6,623 which represents 14.73% of the total Purbeck resident population of 44,973. Wool's resident population is 48.4% female and 51.6% male.

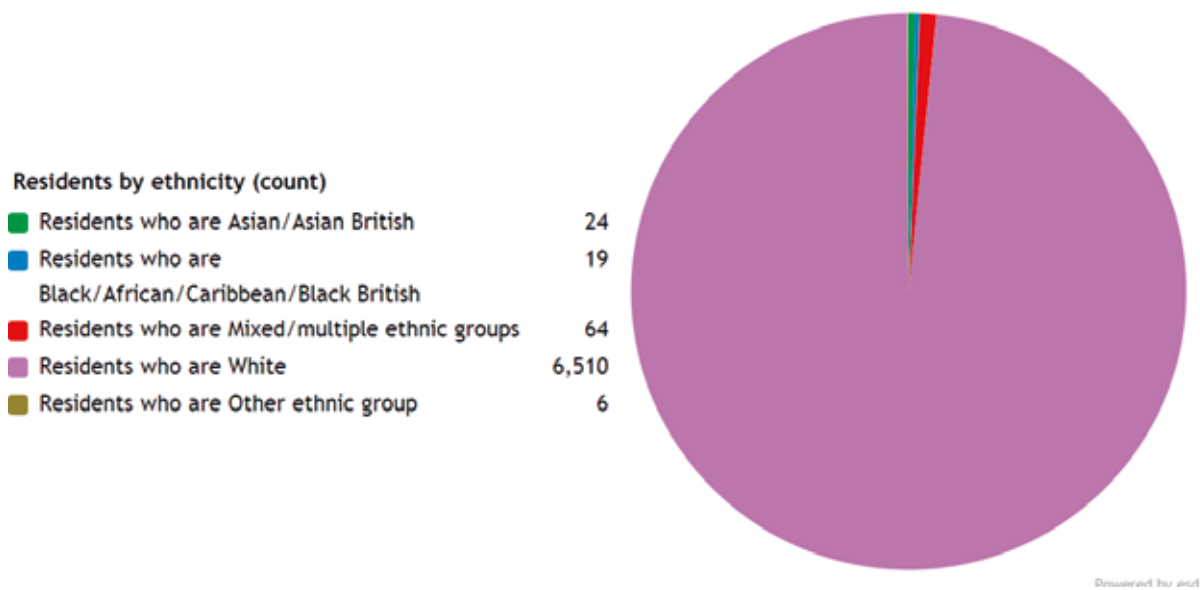
Age

The mean age of the Wool Ward population is 39 years compared to a mean age of 45 years for residents in the whole of Purbeck. The predominant age band in Wool Ward is Age 30 to 44 which represents 21.21% of the population.

Ethnicity

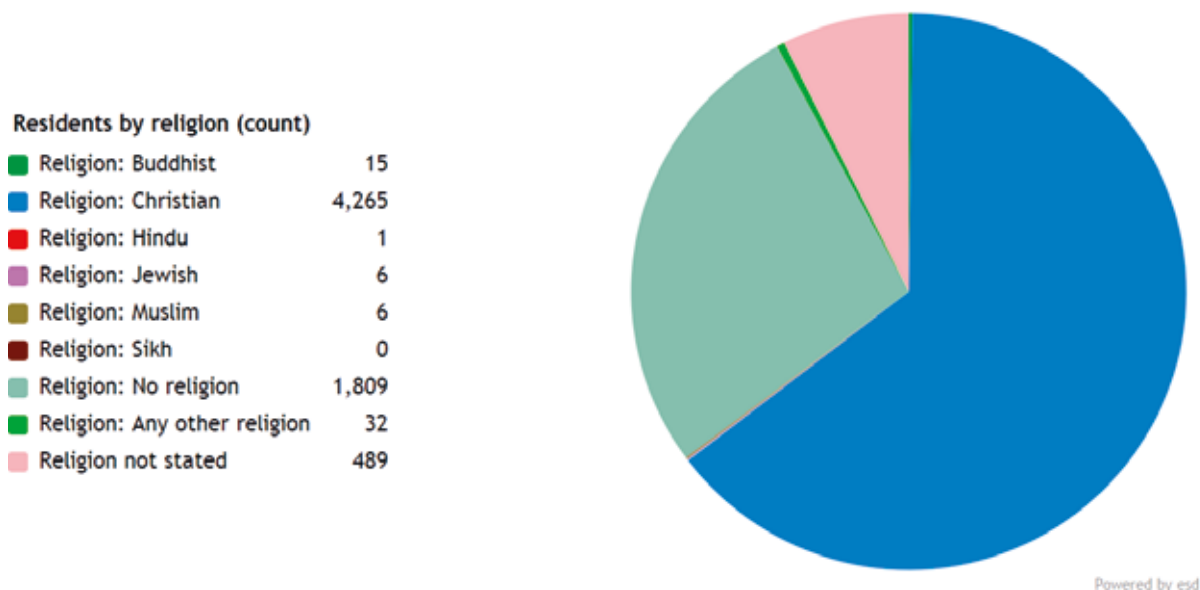
The largest ethnic group is 'Number of usual residents who are White' with 98.3% of the Ward's population. That compares with a figure of 98.6% for the District as a whole, 97.9% for the Dorset County and 95.4% for all of South West. The second largest ethnic group is 'Number of usual residents who are Mixed/multiple ethnic groups' with 1.0% of the Ward's population. That compares with 0.7% for the District as a whole, 0.8% for the Dorset County and 1.4% for all of South West.

The ethnic split of Wool 's residents is shown below.



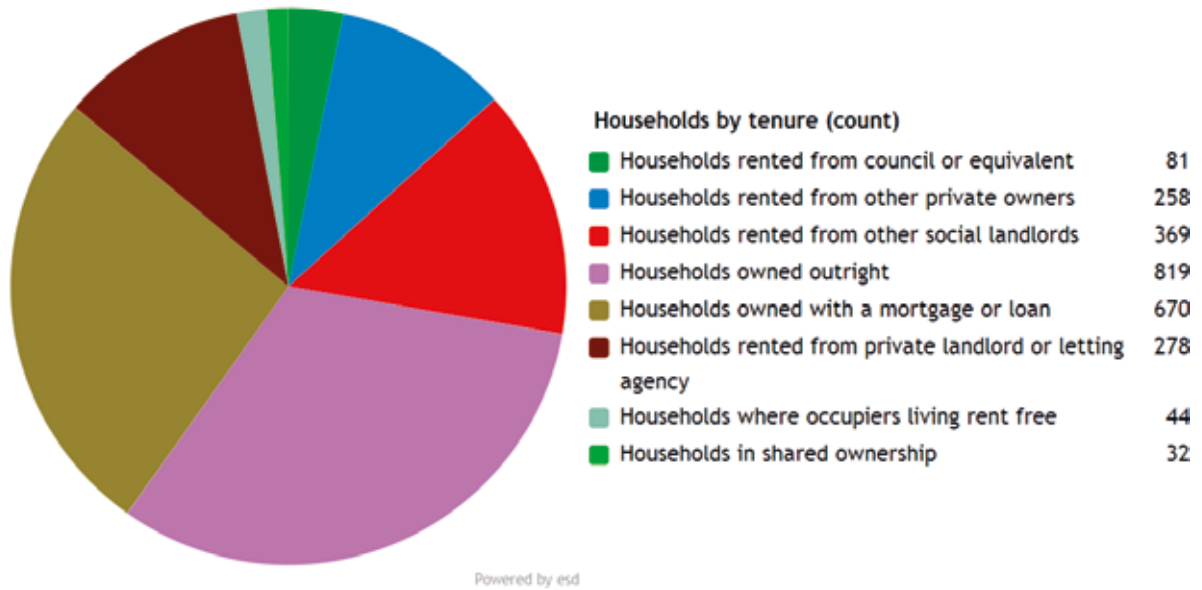
Religion

The 2011 Census provided Ward data on religion as shown below.



Housing

Wool Ward has 2,551 households, which represents 13.03% of Purbeck's 19,583 households. The household split by tenure is shown below.



The largest number of households lives in 'Number of all households - Owned outright' accommodation with 32.1% of the Ward's households. That compares with 42.4% for the District as a whole, 43.0% for Dorset County and 32.5% for the whole of South West.

The second largest number of households lives in 'Percentage of all households - Owned with a mortgage or loan' accommodation with 26.3% of the Ward's households. That compares with 27.1% for the District as a whole, 29.1% for Dorset County and 35.1% for the whole of South West.

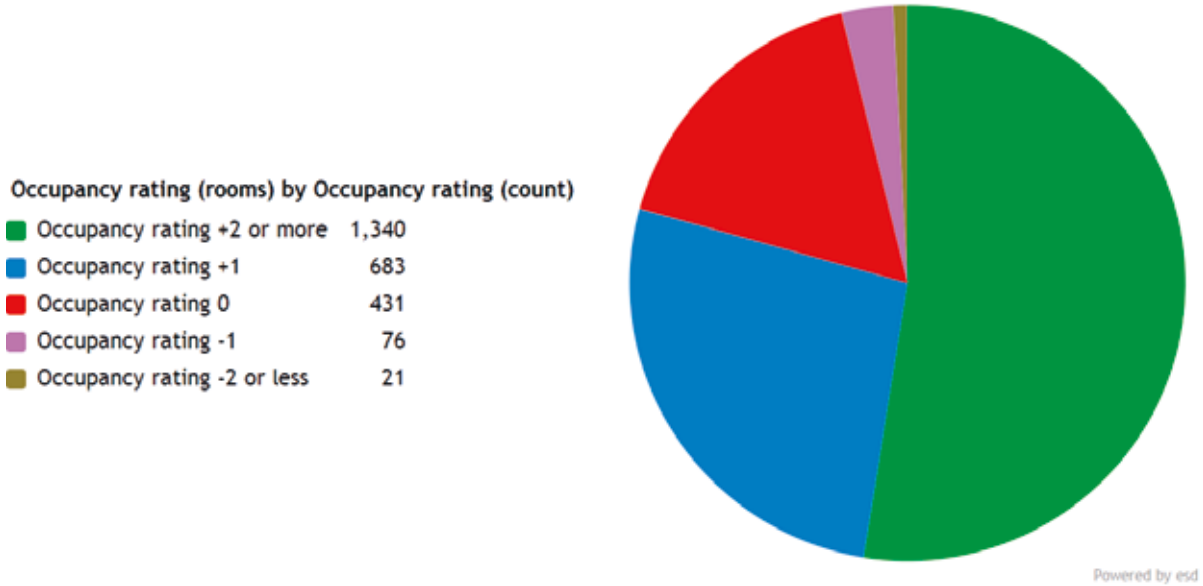
The Ward has 331 households with dependent children aged 0 to 4. That represents 12.98% of the Ward's households.

814 households in the Ward have 'Dependent children in household: All ages'. That represents 31.91% of the Ward's households.

Occupancy

The following chart shows the occupancy rating of the residents of this Ward. Occupancy rating provides a measure of whether a household's accommodation is overcrowded or under-occupied.

The chart shows the number of households with an occupancy rating (rooms) of +2 or more, as a percentage of all households (Census 2011). The ages of the household members and their relationships to each other area is used to derive the number of rooms/bedrooms they require, based on a standard formula. The number of rooms/bedrooms required is subtracted from the number of rooms/bedrooms in the household's accommodation to obtain the occupancy rating. An occupancy rating of -1 implies that a household has one fewer rooms/bedrooms than required, whereas +1 implies that they have one more room/bedroom than the standard requirement.

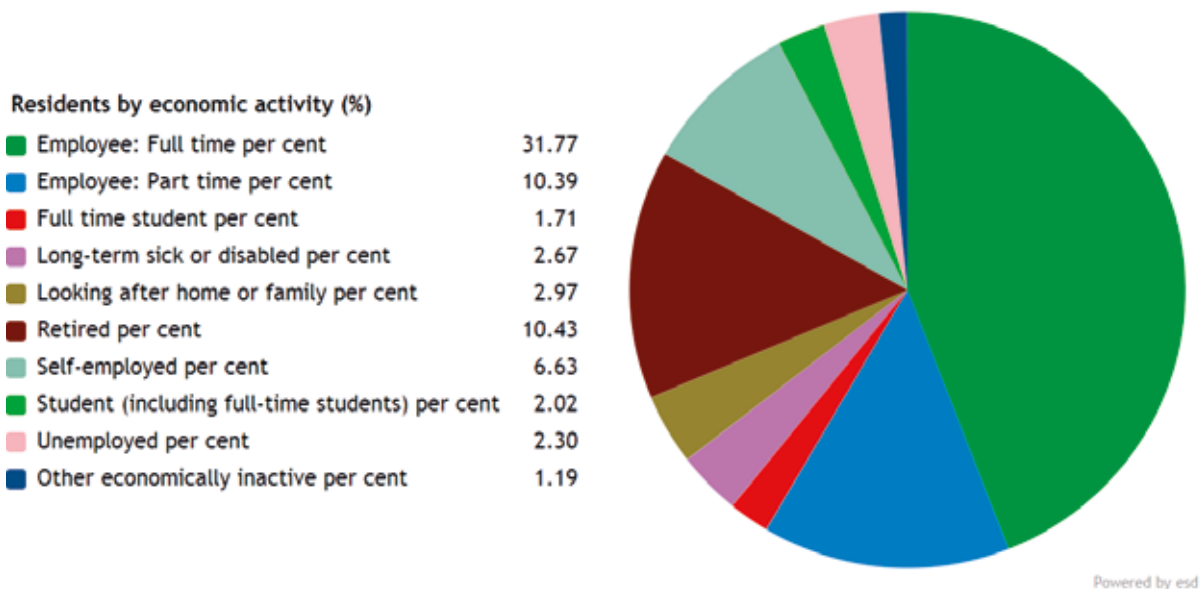


Second Homes

Council tax records at June 2015 showed that 1.42% of dwellings in this Ward were second homes. The percentage of second homes in Purbeck was 7.33%. Purbeck has the highest proportion of second homes of all of Dorset's districts.

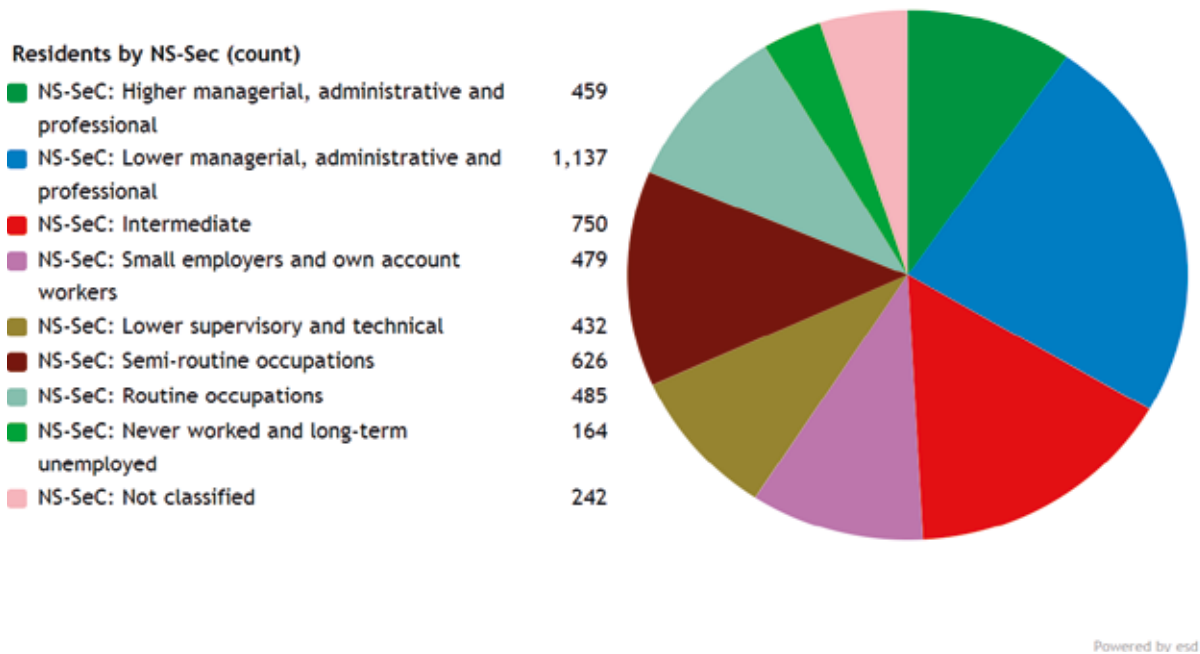
Economy

The following chart shows the economic activity of the Ward's population from the 2011 Census.



Employment

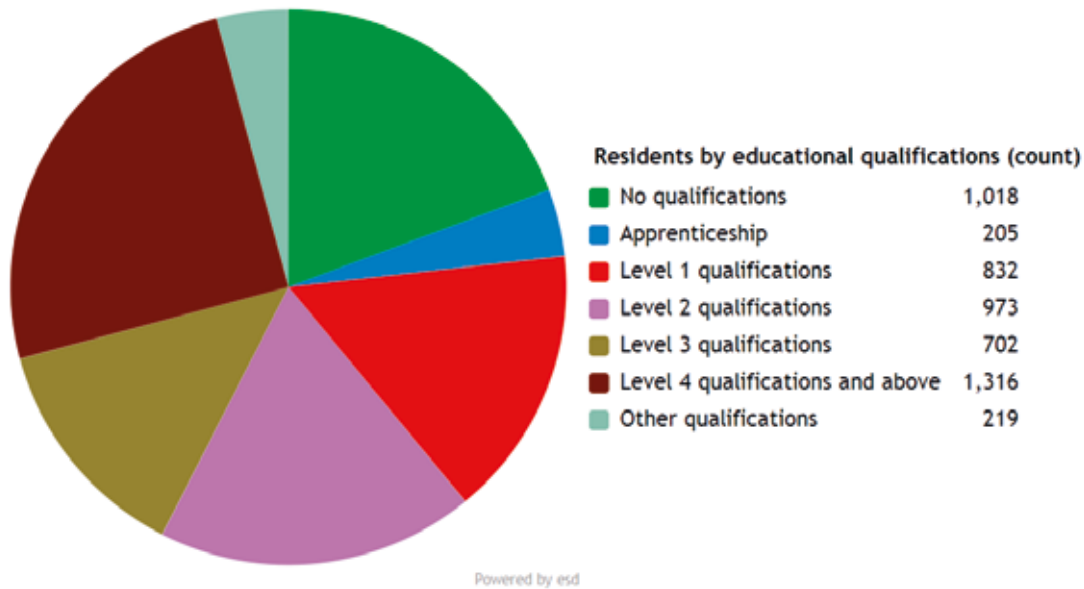
The following chart provides a breakdown of the Wool Ward by socio-economic classification for all residents aged 16 – 74.



The National Statistics Socio-economic Classification (NS-SEC) provides an indication of socio-economic position based on occupation. It is an Office for National Statistics standard classification.

The largest group is 'National Statistics Socio-Economic Classification - 2. Lower managerial, administrative and professional occupations' representing 17.17% of the Ward's population.

Education



19.87% of Wool residents have achieved level 4 qualifications and above compared to 27.40% in South West as a whole and 15.37% of Wool residents have no qualifications compared to 20.70% in South West.

Level 1 Qualifications = GCSE Grades D-G / L1 Diploma

Level 2 Qualifications = GCSE Grades A-C / L2 Diploma

Level 3 Qualifications = A Levels / L3 Diploma / L3 Extended Diploma

Level 4 Qualifications = Foundation Degree / Higher National Certificate (HNC)

Level 5 Qualifications = Foundation Degree / Higher National Diploma (HND)

Level 6 Qualifications = Degree

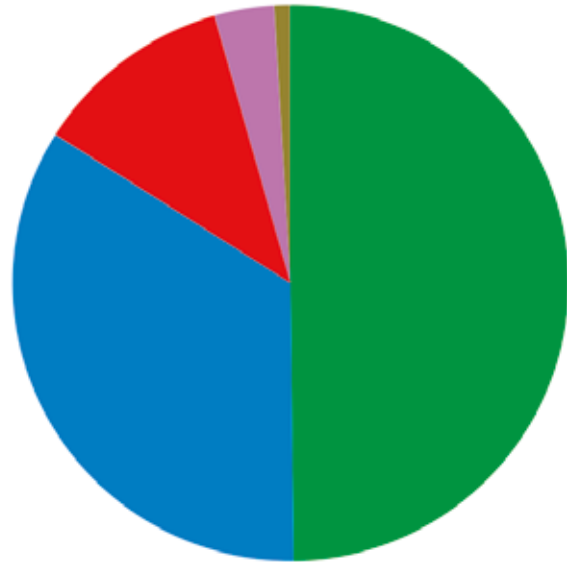
Level 7 Qualifications = Master's Degree

Level 8 Qualifications = Doctorate (PhD)

Health

Residents by level of health (count)

Very good health	3,300
Good health	2,261
Fair health	771
Bad health	229
Very bad health	62



Wool has 229 (3.5%) residents that report being in bad health and 62 (0.9%) residents that report being in very bad health. Its ranking for the number of residents in very bad health is 7 (out of 13 Wards) within Purbeck.

References

The majority of the data in this factsheet was sourced from LG Inform Plus.