



## Unemployment in Dorset

Welcome to this **ourcommunities** bitesize bulletin on Jobseeker's Allowance claimants in Dorset. This edition will include the current picture for claimant unemployment in Dorset and the change over the past year. The current picture is based on data for February 2015.



- Young claimants have increased over the last quarter but the number has dropped over the year.
- Seasonal increase in short-term claimants.



- Almost a thousand fewer claimants over the past year.
- Lowest long-term unemployment since 2011.

Big Numbers Box

**2,254** total claimants

reduction in claimants over the last year **30%**

**645**

Dorset young people aged 16-24 claiming Jobseeker's allowance - and we're above the national level

**15** long term claimants leaving the count each month (net)

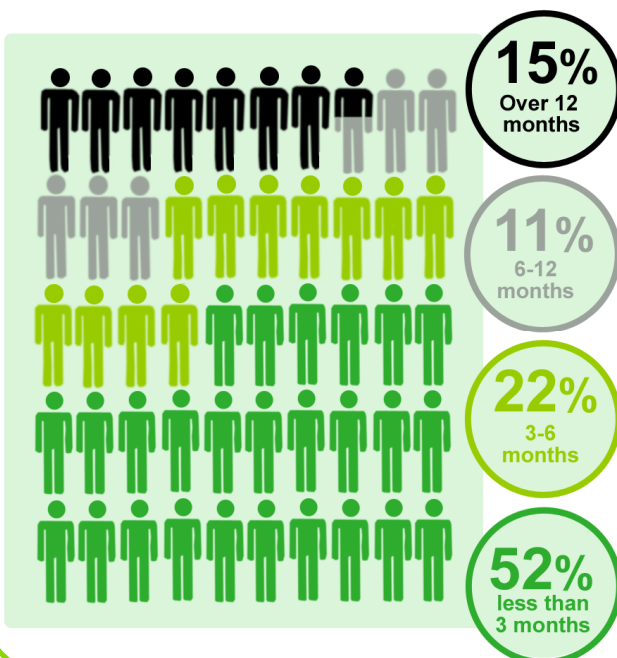
**0.9%** Dorset claimant rate

**1.3%** South-West claimant rate

**2.0%** National claimant rate

people currently unemployed for over 12 months **330**

### Box 1: Length of time unemployed of current claimants

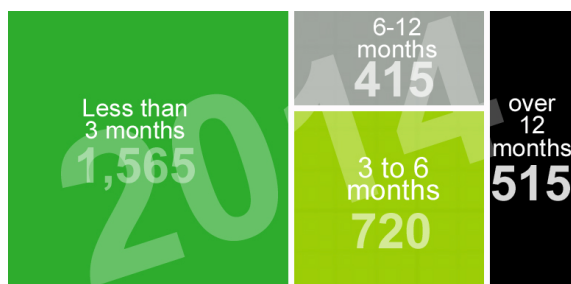


- Around 330 people in Dorset have been claiming Jobseeker's Allowance for 12 months or longer (long-term unemployed).
- This is the lowest number since September 2011.
- The rate of long-term unemployment is higher nationally at 27% of all claimants.
- The largest proportion of Jobseeker's Allowance claimants in Dorset have been claiming for less than three months.
- More people join the count in winter months due to seasonal employment in areas such as Weymouth and Portland.



## Box 2: Length of time unemployed—change over the last year

Then 3,226 claimants



Subject to rounding

- The number of people who are claiming Jobseeker's Allowance in Dorset decreased by around 30% between February 2014 and February 2015.
- Those claiming for 6-12 months fell by the greatest percentage (down by 39%).

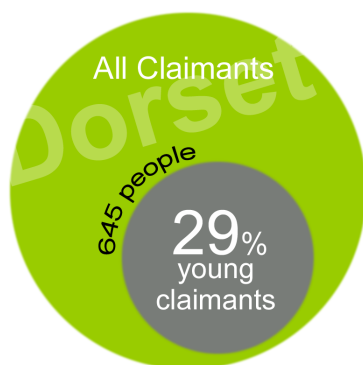
- Long-term claimants have reduced by more than a third over the year to February 2015 (36%).
- Christchurch has the highest long-term claimant level (21%) whilst West Dorset has the lowest (10%). North Dorset has seen the largest reduction over the year (45%).

Now 2,254 claimants



Subject to rounding

## Box 3: Young claimants



- 29% of Dorset Jobseeker's Allowance claimants are aged 16-24 - higher than national level of 23%.
- This is around 645 people.
- More recently, over the last five months, the number of young claimants has been increasing.
- Short-term claimants in Weymouth and Portland contribute most to this increase.
- Seasonal employment means a rise in winter months.
- The rate is highest in Christchurch and Weymouth and Portland.

## Why does it matter:

Economic prosperity in Dorset is a key objective of the county council and this means low levels of unemployment. It is also important to maintain people's employability by ensuring they have the right skills and do not remain unemployed for long periods.

Young people in Dorset can face a skills mismatch, that could be addressed through training - especially if more employers came forward to offer quality apprenticeships. In addition to the economic price tag of youth unemployment, there are also personal and social costs. There is evidence that spells of unemployment for a young person often hurt happiness and mental health for many years after.

## Like more info?

Visit [dorsetforyou.com/331625](http://dorsetforyou.com/331625)

or contact Consultation and Research team, Chief Executive's department  
s.farr@dorsetcc.gov.uk 01305 221328  
Data source: Claimant Count, ONS  
Feb 2014 & 2015