

The Indices of Deprivation 2019 a summary report for Dorset Council¹

This English Indices of Deprivation helps identify and prioritise areas to assist the government and other agencies both national and local in narrowing the gap between deprived neighbourhoods and the rest of the country. The Indices have been produced six times - 2000, 2004, 2007, 2010, 2015 and now 2019.

The data for 2019 was released at the end of September 2019.

The results are provided at Lower Super Output Area Level.² This level of geography is considered to be the most appropriate for measuring deprivation at a smaller level across the country.

The results provided in this report for Dorset Council look at the Index of Multiple Deprivation – a composite deprivation indicator and each of its seven constituent domains. The report also considers two supplementary indicators. As well as the IMD and the seven domains, data from the Indices of Deprivation also includes a number of sub-domains; these have not been included in this report but are available by request from the Research Team at Dorset Council.

The table over page shows the range of indicators provided by the Indices of Deprivation 2019. The main domains and supplementary indicators are provided in this report.

The data and maps presented in this document represent a summary of the information made available by the department for communities and local government in its release of the Indices of Deprivation 2019.

The results for Dorset are also available as maps on Dorset Insight's website www.dorsetcouncil.gov.uk/statistics. This section of the website also includes maps and data presented at LSOA level for each of the **Sub Unitary Geography**³ areas in Dorset. The information available also includes the sub-domains listed below.

¹ In this report Dorset refers to the Dorset Council area

² Lower Super Output Areas are Census based geographies with an average population of 1,500 people.

³ There are six Sub Unitary Geographies in Dorset. They have been produced to provide information at a level below Unitary but bigger than LSOA or Ward. More information available on Dorset Insight Website.

Index of Multiple Deprivation (IMD)	
Main domains	Sub domains
Income	
Employment	
Health	
Education	Children/young people
	Skills
Barriers to Housing and Services	Wider Barriers
	Geographical Barriers
Crime	
Living Environment	Indoors
	Outdoors
Supplementary income indicators	
Income deprivation affecting children index	
Income deprivation affecting older people	

The Index of Deprivation 2019 – Dorset Council Results

Introduction

The Ministry of Housing, Communities and Local Government commissioned the Oxford Consultants for Social Inclusion (OCSI) from the Social Disadvantage Research Centre at the University of Oxford to update the Indices of Deprivation 2019 (ID 2019) for England. Following public consultation, and a significant programme of work by the research team the Indices of Deprivation 2019 (ID2019) have been produced using the same approach, structure and methodology used to create the ID2015.

The new Index of Multiple Deprivation 2019 (IMD 2019) is a Lower layer Super Output Area (LSOA) level measure of multiple deprivation and is made up of seven LSOA level domain indices. There are also two supplementary indices (Income Deprivation Affecting Children and Income Deprivation Affecting Older People) and a number of sub-domains.

Summary measures of the IMD 2019 are presented at sub unitary authority level. The LSOA level Domain Indices and IMD 2019, together with the sub unitary authority summaries are referred to as the Indices of Deprivation 2019 (ID 2019).

The ID 2019 is based on the approach, structure and methodology that were used to create the previous ID 2015. The ID 2019 updates the ID 2015 using more up-to-date data. The new Index of Multiple Deprivation 2019 contains seven domains which relate to income deprivation, employment deprivation, health deprivation and disability, education skills and training deprivation, barriers to housing and services, living environment deprivation, and crime.

Area based measures

The area itself can be characterised as deprived *relative to other areas*, in a particular dimension of deprivation, on the basis of the proportion of people in the area experiencing the type of deprivation in question. In other words, the experience of the people in an area gives the area its deprivation characteristics. The area itself is *not* deprived, but the presence of a concentration of people experiencing deprivation in an area may give rise to a compounding deprivation effect – this is still *measured* by reference to those individuals.

Having attributed the aggregate of individual experience of deprivation to the area, it is possible to say that an area is deprived in that particular dimension. Once the specific dimensions of deprivation have been measured, these can be understood as elements of multiple deprivation.

The Concept of Multiple Deprivation

The IMD 2019 is a measure of multiple deprivation at the small area level. The model of multiple deprivation which underpins the IMD 2019 is based on the idea of distinct dimensions of deprivation which can be recognised and measured separately. These are experienced by individuals living in an area. People may be counted in one or more of the domains, depending on the number of types of deprivation that they experience. The overall IMD is conceptualised as a weighted area level aggregation of these specific dimensions of deprivation.

Domains and Indicators

Each of the seven Domains contains a number of component indicators. The criteria for inclusion of these indicators are that they should be 'domain specific' and appropriate for the purpose (as direct as possible measures of that form of deprivation); measuring major features of that deprivation (not conditions just experienced by a very small number of people or areas); up-to-date; capable of being updated on a regular basis; statistically robust; and available for the whole of England at a small area level in a consistent form.

Data Time Point, Spatial Scale and Denominators

Where possible, the indicators relate to 2015 to 2019 and, as has been indicated, the IMD 2019 and component domains are presented at LSOA level. Summaries of the IMD 2019 are also presented at sub unitary geography level. Denominators at LSOA level for 2015 were provided by the Office for National Statistics' Small Area Population Estimation Unit. For the few indicators where numerators were derived from the 2011 Census, the denominators were also drawn from the Census.

The Domains

Income Deprivation Domain

The purpose of this domain is to capture the proportion of the population experiencing income deprivation in an area.

- Adults and children in Income Support Households (Source: Department for Work and Pensions (DWP 2015))
- Adults and children in Income-Based ESA Households (Source: DWP 2015)
- Adults and children in Pension Credit (Guarantee) Households (Source: DWP 2015)
- Adults and children in Child Tax Credit families (who are not claiming Income Support, income-based Jobseeker's Allowance or Pension Credit) whose equivalised income (excluding housing benefits) is below 60% of the median before housing costs (HMRC 2015)
- National Asylum Support Service (NASS) supported asylum seekers in England in receipt of subsistence support, accommodation support, or both (Source: NASS 2015)

As in the ID2015, a supplementary index – Income Deprivation Affecting Children Index – has been produced alongside the Income Deprivation Domain. This covers only children aged 0-15 living in income deprived households, defined as either families receiving Income Support or income-based Jobseeker's Allowance or Pension Credit (Guarantee) or those not in receipt of these benefits but in receipt of Child Tax Credit with an equivalised income (excluding housing benefits) below 60% of the national median before housing costs. The Income Deprivation Affecting Children Index is expressed as the proportion of all children aged 0-15 living in income deprived families.

A second supplementary index, also produced in 2019, is the Income Deprivation Affecting Older People Index. This index represents income deprivation affecting older people, expressed as the proportion of adults aged 60 or over living in Income Support or income based Jobseeker's Allowance or Pension Credit (Guarantee) families.

Employment Deprivation Domain

This domain measures employment deprivation conceptualised as involuntary exclusion of the working age population from the labour market.

- Recipients of Jobseekers Allowance (both contribution-based and income based): men aged 18-64 and women aged 18-59 (Source: DWP 2015/16)
- Recipients of Incapacity Benefit: men aged 18-64 and women aged 18-59 (Source: DWP 2015/16)
- Recipients of Severe Disablement Allowance: men aged 18-64 and women aged 18-59 (Source: DWP 2015/16)
- Claimants of Employment Support Allowance aged 18-59/64 (those with a contribution-based element) (Source: DWP 2015/16)
- Claimants of Universal Credit in the 'Searching for work' and 'No work requirements' conditionality groups (Source: DWP 2015/16)
- Claimants of Carers Allowance aged 18-59/64 (Source: DWP 2015/16)

Health Deprivation and Disability Domain

This domain measures rates of poor health, early mortality and disability in an area and covers the entire age range.

- Years of Potential Life Lost (YPLL) (2013 to 2017, Source: ONS)
- Comparative Illness and Disability Ratio (CIDR) (2016, Source: DWP)
- Measures of acute morbidity, derived from Hospital Episode Statistics (2012 to 2016/17, Source: Department of Health)
- The proportion of adults under 60 suffering from mood or anxiety disorders based on prescribing (2016/17, Source: Health and Social Care Information Centre), Hospital Episode Statistics (2016 to 2017, Source: Health and Social Care Information Centre), Suicide Mortality Data (Source: ONS 2013 to 2017)

Education, Skills and Training Deprivation Domain

This domain captures the extent of deprivation in terms of education, skills and training in a local area. The indicators are structured into two sub domains: one relating to education deprivation for children/young people in the area, and one relating to lack of skills and qualifications among a sub-set of the working age adult population.

Sub Domain: Children/young people

- **Key Stage 2 Attainment**

Numerator: Prior to 2015/16 an average point score was calculated for pupils taking reading, writing and mathematics. From 2015/16 onwards, this was replaced by a scaled score for pupils taking Mathematics, English reading and English grammar, punctuation and spelling Key Stage 2 examinations. The numerator is the total score of pupils taking Reading, Writing and Mathematics in 2014/15, and scaled scores in Mathematics, English reading and English grammar, punctuation and spelling in 2015/16 and 2016/17 in a Lower-layer Super Output Area.

(Source: Department for Education)

Denominator:

- The denominator is the total number of subjects (exams) taken by pupils for the same years as the numerator. Because the scores are calculated differently in 2014/15 than 2015/16 and 2016/17

(Source: Department for Education)

- **Key Stage 4 Attainment**

Numerator: Total capped (best 8) score of pupils taking Key Stage 4 exams in maintained schools, 2014/15, 2015/16 and 2016/17

(Source: Department for Education)

Denominator: All pupils in maintained schools who took Key Stage 4 exams, 2014/15, 2015/16 and 2016/17 (Source: Department for Education)

- **Secondary School absence**

Numerator: Number of authorised and unauthorised absences from secondary school, 2014/15, 2015/16 and 2016/17 (Source: Department for Education)

- **Staying on in education post 16**

Proportion of young people not staying on in school or non-advanced education above the age of 16, 2010,2011 and 2012 Source: HMRC Child Benefit (CB) data⁴

- Proportion of those aged under 21 not entering higher education (4 year average, 2009-2013, Source: Higher Education Statistics Agency (HESA))

⁴ This indicator has remained the same as the 2015 Indicator due to the complications arising from changes in legislation regarding the age pupils can leave education.

Sub Domain: Skills

- Proportions of working age adults men (aged 25-64) and women (aged 25-59) in the area with no or low qualifications (Source: 2011 Census)
- English language proficiency

Numerator: Working-age adults who cannot speak English or cannot speak English well, non-overlapping count with Adult skills indicator, women aged 25 to 59 and men aged 25 to 64, 2011 (Office for National Statistics, from Census 2011)

Denominator: Working-age adults, women aged 25 to 59 and men aged 25 to 64, 2011 (Census).

Barriers to Housing and Services Domain

The purpose of this domain is to measure barriers to housing and key local services.

The indicators are structured into two sub-domains: 'geographical barriers', and 'wider barriers' which includes issues relating to access to housing, such as affordability.

Sub Domain: Wider Barriers

- Household overcrowding (Source: 2011 Census)
- LA level percentage of households for whom a decision on their application for assistance under the homeless provisions of housing legislation has been made, assigned to the constituent SOAs (Source: Communities and Local Government, 2015/16 to 2017/18)
- Difficulty of Access to owner-occupation - Modelled estimate of households unable to afford to enter owner-occupation or the private rental market on the basis of their income, estimated primarily from the Family Resources Survey, Regulated Mortgage Survey, Land Registry house prices, and Valuation Office Agency market rents, 2016.

Sub Domain: Geographical Barriers

- Road distance to a GP surgery (Source: Health and Social Care Information Service, 2019)
- Road distance to a general stores or supermarket (Source: Ordnance Survey, 2018)
- Road distance to a primary school (Source: Department for Education, 2018)
- Road distance to a Post Office or sub post office (Source: Post Office Ltd, 2018)

Crime Domain

This domain measures the rate of recorded crime for four major crime types, representing the risk of personal and material victimisation at a small area level.

- Burglary (4 recorded crime offence types, Police Force data for 2017/18)
- Theft (5 recorded crime offence types, Police Force data for 2017/18)
- Criminal damage (8 recorded crime offence types, Police Force data for 2017/18)
- Violence (18 recorded crime offence types including Robbery, Police Force data for 2017/18)

The Living Environment Deprivation Domain

This domain measures the quality of individuals' immediate surroundings both within and outside the home. It comprises two sub-domains: the 'indoors' living environment which measures the quality of housing, and the 'outdoors' living environment which contains two measures about air quality and road traffic accidents.

Sub-Domain: The 'indoors' living environment

- Social and private housing in poor condition (2015 average, Source EHS)
- Houses without central heating (Source: 2011 Census)

Sub-Domain: The 'outdoors' living environment

- Air quality (2016, Source: UK Air Information Resource air quality)
- Road traffic accidents involving injury to pedestrians and cyclists (2015 – 2017) average, Source: Department for Transport)

Outputs

1. Each of the 32,844 LSOAs in England has been assigned a score and rank for the IMD 2019; the seven domain indices; the sub-domains; and the two supplementary indices (Income Deprivation Affecting Children and Income Deprivation Affecting Older People).
2. For this report each LSOA in Dorset is given a national and county rank.

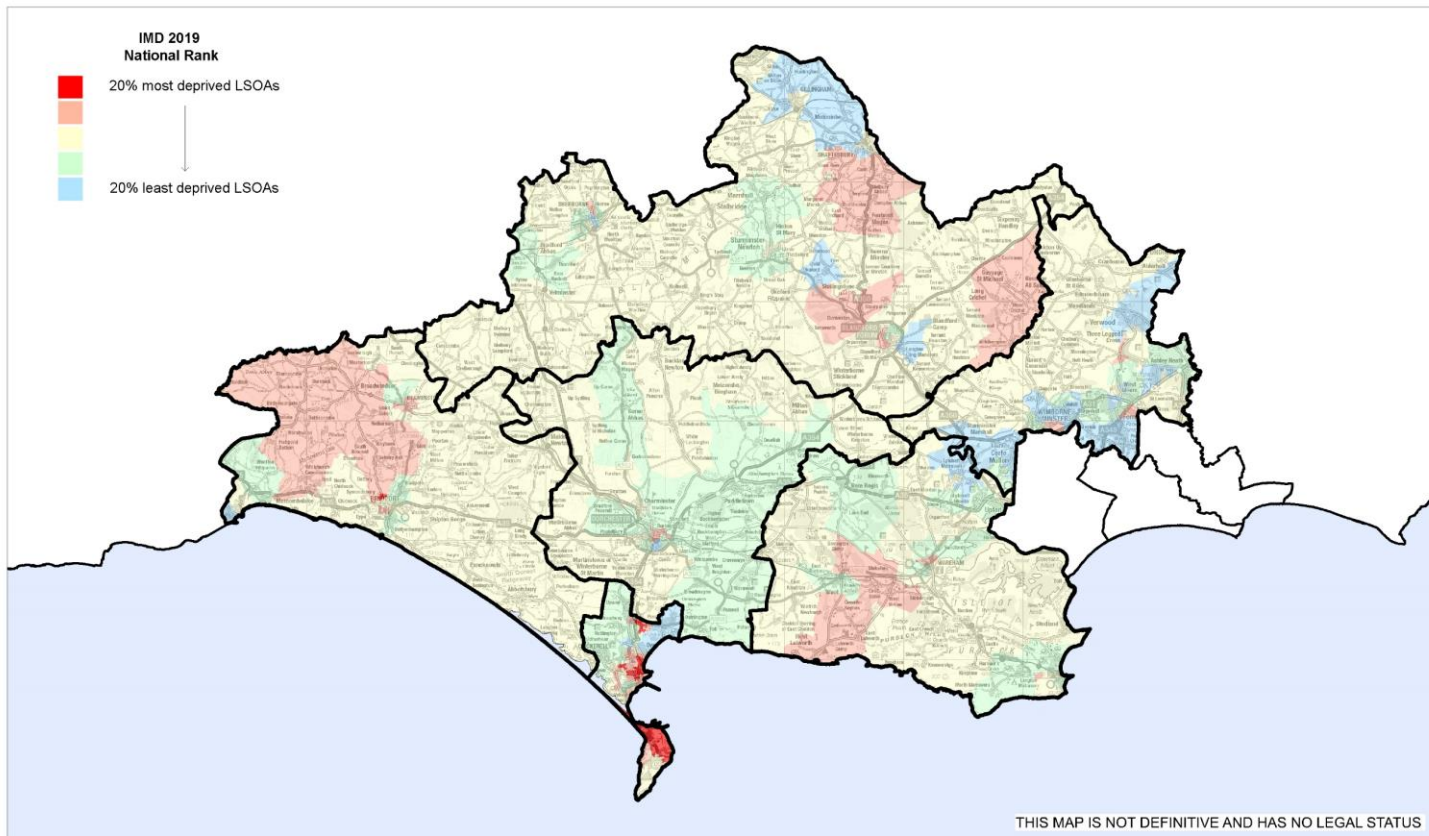
A look at the results for Dorset

Index of Multiple Deprivation

The IMD 2019 is a measure of multiple deprivation at the small area level. The model of multiple deprivation which underpins the IMD 2019 is based on the idea of distinct dimensions of deprivation which can be recognised and measured separately. These are experienced by individuals living in an area. People may be counted in one or more of the domains, depending on the number of types of deprivation that they experience. The overall IMD is conceptualised as a weighted area level aggregation of these specific dimensions of deprivation. The maps for each area include the boundaries for Sub Unitary Geographies as the Districts no longer exist.

There are eleven areas in Dorset Council that are within the top 20% most deprived nationally for multiple deprivation, up from ten in 2015. Ten of them are within Dorset South SUG area and one from Dorset West SUG area. There are six areas within the top 10% nationally all within Dorset South SUG. Melcombe Regis Town Centre and Littlemoor West are the most deprived.

LSOA code (2011)	Dorset LSOA Name	LSOA name (2011)	Local Authority District code (2019)	Local Authority District name (2019)	Index of Multiple Deprivation (IMD) Rank (where 1 is most deprived)	Index of Multiple Deprivation (IMD) Decile (where 1 is most deprived 10% of LSOAs)
E01020554	Melcombe Regis Town Centre	Weymouth and Portland 004B	E06000059	Dorset	1,142	1
E01020552	Littlemoor West	Weymouth and Portland 001B	E06000059	Dorset	1,396	1
E01020555	Melcombe Regis Park District	Weymouth and Portland 004C	E06000059	Dorset	1,524	1
E01020569	Fortuneswell North	Weymouth and Portland 008D	E06000059	Dorset	2,073	1
E01020575	Westham North Westhaven	Weymouth and Portland 003B	E06000059	Dorset	2,076	1
E01020582	Rodwell and Chapelhay	Weymouth and Portland 004F	E06000059	Dorset	3,273	1
E01020553	Melcombe Regis Carlton Road	Weymouth and Portland 004A	E06000059	Dorset	3,531	2
E01020573	Westham East Knightsdale Road	Weymouth and Portland 005B	E06000059	Dorset	4,723	2
E01020563	Tophill East Grove Road	Weymouth and Portland 008A	E06000059	Dorset	5,796	2
E01020499	Bridport Court Orchard	West Dorset 006B	E06000059	Dorset	6,009	2
E01033200	Fortuneswell South	Weymouth and Portland 008E	E06000059	Dorset	6,203	2



Dorset Council - Index of Multiple Deprivation (IMD) 2019 - National Ranking

Ref:
Date: 2019
Scale: 1:377062
Drawn By:
Cent X: 375287
Cent Y: 99179



© Crown Copyright and database rights 2019 Ordnance Survey 100080963
 You are permitted to use this data solely to enable you to respond to, or interact with, the organisation that provided you with the data. You are not permitted to copy, sub-licence, distribute or sell any of this data to third parties in any form.
 Aerial Photography © UK Perspectives 2002 & © Geomapping 2005, 2009 & 2014
 Ordnance Survey and Blunsky International Limited [2017]

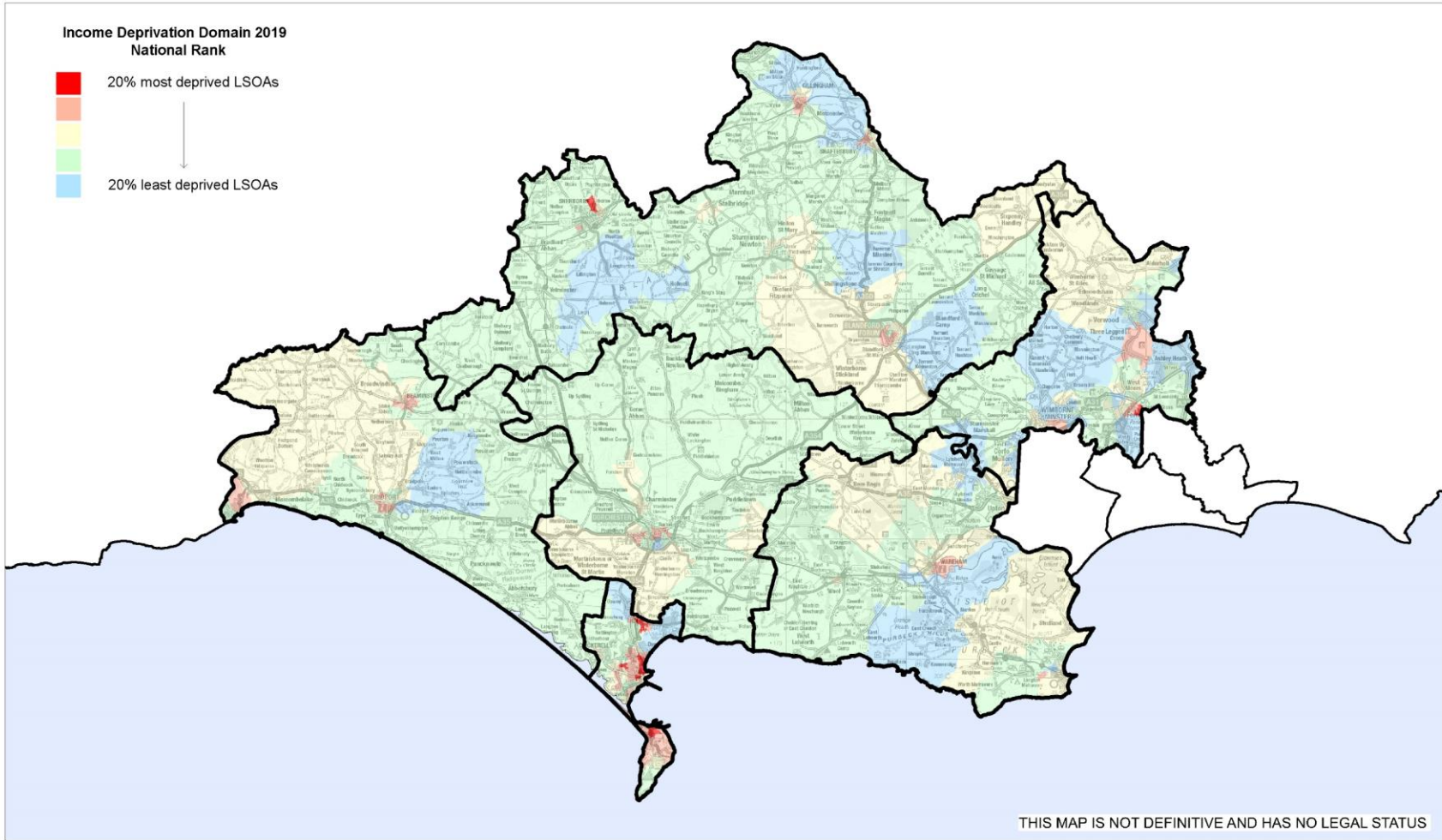
Income Deprivation

The purpose of this domain is to capture the proportion of the population experiencing income deprivation in an area.

Nine areas in Dorset fall into the top 20% most deprived nationally for income deprivation, this is up from seven in 2015. Seven of those are within Dorset South SUG area. Littlemoor West, Fortuneswell North and Westham North Westhaven are the most deprived areas in the Dorset council area for income deprivation and within the top 10% nationally. Outside of Weymouth and Portland, Ferndown Tricketts Cross East in Dorset East SUG area and Sherborne East Gryphon in Dorset North SUG area also represented in the top 20% most deprived. Both of these two areas were not in the top 20% nationally in 2015.

LSOA code (2011)	Dorset LSOA Name	LSOA name (2011)	Local Authority District name (2019)	Income Rank (where 1 is most deprived)	Income Decile (where 1 is most deprived 10% of LSOAs)
E01020552	Littlemoor West	Weymouth and Portland 001B	Dorset	1578	1
E01020569	Fortuneswell North	Weymouth and Portland 008D	Dorset	2098	1
E01020575	Westham North Westhaven	Weymouth and Portland 003B	Dorset	2632	1
E01020555	Melcombe Regis Park District	Weymouth and Portland 004C	Dorset	4254	2
E01020554	Melcombe Regis Town Centre	Weymouth and Portland 004B	Dorset	4292	2
E01020553	Melcombe Regis Carlton Road	Weymouth and Portland 004A	Dorset	4685	2
E01020582	Rodwell and Chapelhay	Weymouth and Portland 004F	Dorset	5613	2
E01020393	Ferndown Tricketts Cross East	East Dorset 008D	Dorset	6225	2
E01020543	Sherborne East Gryphon	West Dorset 001B	Dorset	6534	2

Greenhill and Furzehill in Dorset East SUG is the least deprived LSOA in the Dorset Council area in relation to this domain, followed by Blandford Camp in North Dorset SUG. Dorset East SUG area has the greatest proportion of areas within the least deprived 20%.



Dorset Council - Income Deprivation Domain 2019 - National Ranking

Ref:
Date: 2019
Scale: 1:377062
Drawn By:
Cent X: 375287
Cent Y: 99179



© Crown Copyright and database rights 2019 Ordnance Survey 0100009963. You are permitted to use this data solely to enable you to respond to, or interact with, the organisation that provided you with the data. You are not permitted to copy, re-broadcast, distribute or sell any of this data to third parties in any form.
 Aerial Photography © LXPerspective 2002 & © Getmapping 2005, 2009 & 2014
 Getmapping Plc and Bluejay International Limited [2017]

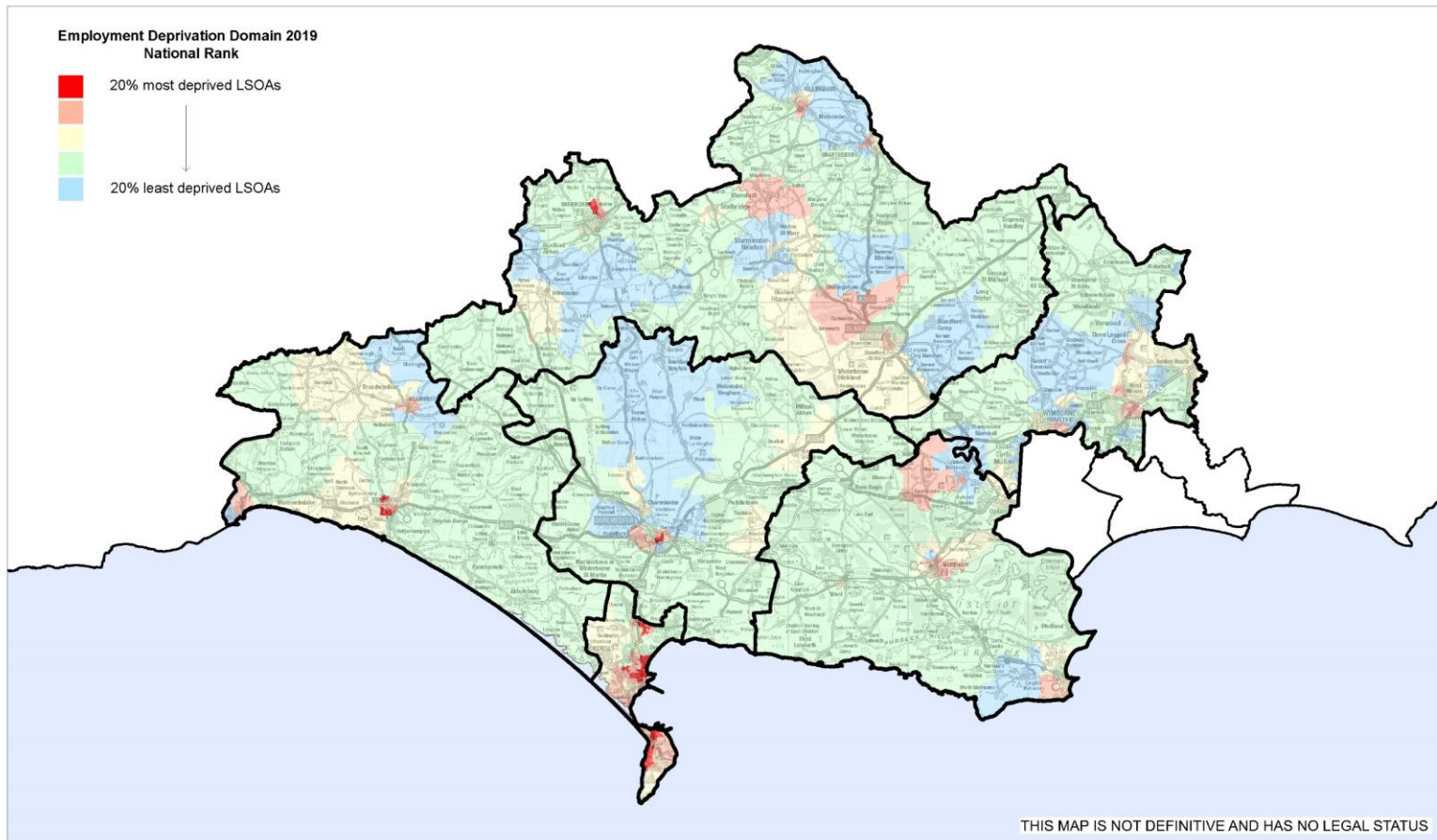
Employment Deprivation Domain

This domain measures employment deprivation conceptualised as involuntary exclusion of the working age population from the labour market.

Fourteen LSOAs in the Dorset Council area fall into the top 20% most deprived nationally for employment deprivation up from ten in 2015. Ten of these areas are within Dorset South SUG area, two in Dorset West SUG area, one in Mid Dorset SUG and one in Dorset North. The top nine of these areas are in former borough of Weymouth and Portland.

LSOA code (2011)	Dorset LSOA Name	LSOA name (2011)	Local Authority District name (2019)	Employment Rank (where 1 is most deprived)	Employment Decile (where 1 is most deprived 10% of LSOAs)
E01020575	Westham North Westhaven	Weymouth and Portland 003B	Dorset	1189	1
E01020555	Melcombe Regis Park District	Weymouth and Portland 004C	Dorset	1223	1
E01020552	Littlemoor West	Weymouth and Portland 001B	Dorset	1455	1
E01020554	Melcombe Regis Town Centre	Weymouth and Portland 004B	Dorset	1687	1
E01020569	Fortuneswell North	Weymouth and Portland 008D	Dorset	2248	1
E01020553	Melcombe Regis Carlton Road	Weymouth and Portland 004A	Dorset	2773	1
E01020573	Westham East Knightsdale Road	Weymouth and Portland 005B	Dorset	3198	1
E01020582	Rodwell and Chapelhay	Weymouth and Portland 004F	Dorset	3797	2
E01020556	Melcombe Regis Lodmoor Hill	Weymouth and Portland 004D	Dorset	3812	2
E01020499	Bridport Court Orchard	West Dorset 006B	Dorset	4375	2
E01032645	Dorchester Centre Brewery Square	West Dorset 009I	Dorset	5032	2
E01020502	Bridport Skilling	West Dorset 008A	Dorset	5459	2
E01020564	Weston West	Weymouth and Portland 009B	Dorset	5896	2
E01020543	Sherborne East Gryphon	West Dorset 001B	Dorset	5936	2

Thirty-nine areas fall into the top 20% least deprived areas nationally; these are again dominated by Dorset East SUG area. Blandford Army Camp in Dorset North SUG is the least deprived area of the county for Employment Deprivation followed by Greenhill and Furzehill in Dorset East SUG.



Dorset Council - Employment Deprivation Domain 2019 - National Ranking

Ref:
Date: 2019
Scale: 1:377062
Drawn By:
Cent X: 375287
Cent Y: 99179



© Crown Copyright and database rights 2019 Ordnance Survey 0100009663
 You are permitted to use this data solely to enable you to respond to, or interact with, the organisation that provided you with the data. You are not permitted to copy, sub-licence, distribute or sell any of this data to third parties in any form.
 Aerial Photography © LK Perspectives 2002 & © Geomapping 2005, 2009 & 2014
 Geomapping Plc and BlueSky International Limited [2017]

Health and Disability Deprivation Domain

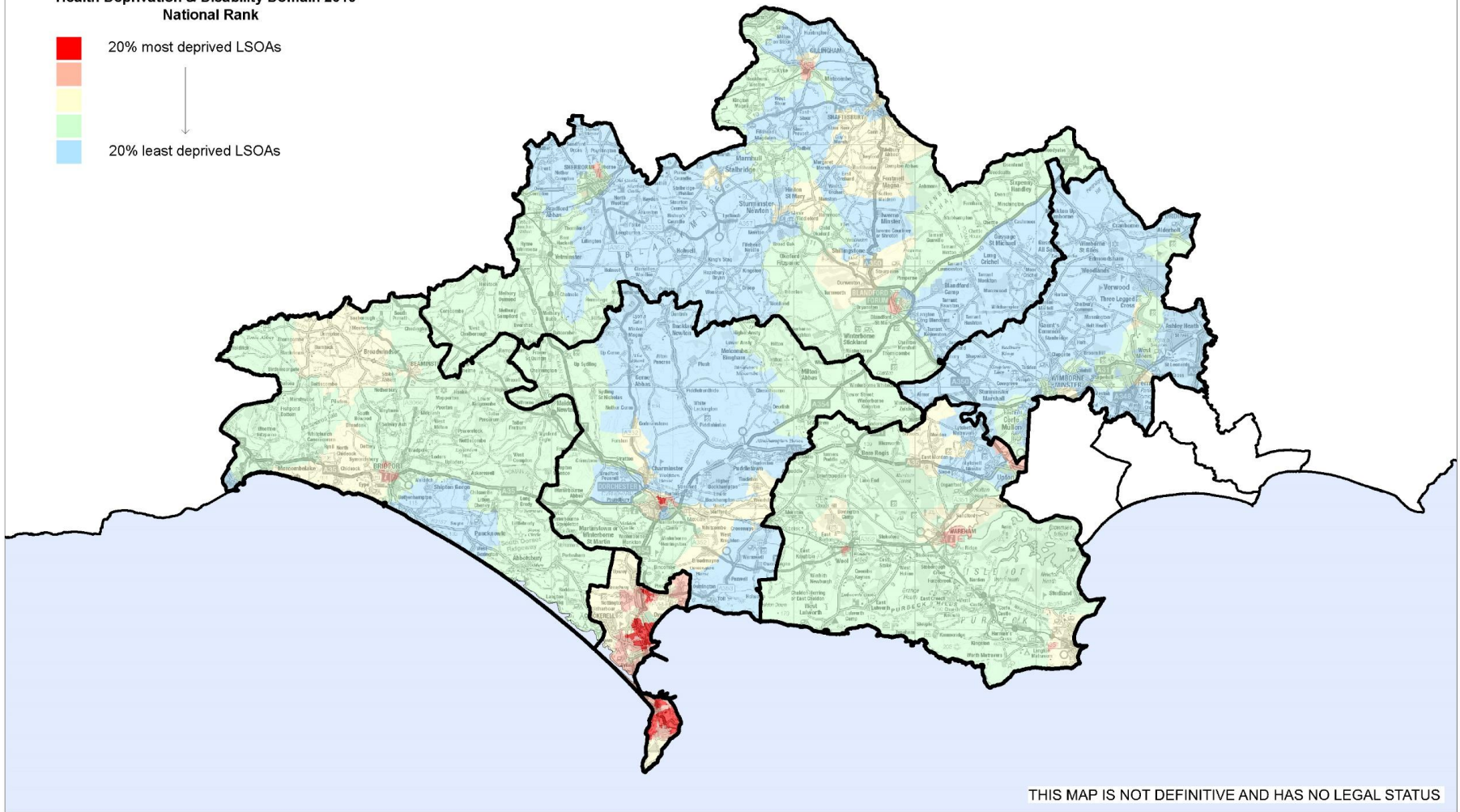
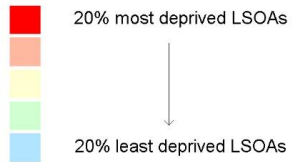
This domain measures rates of poor health, early mortality and disability in an area and covers the entire age range.

In Dorset, thirteen areas fall into the top 20% most deprived nationally for this indicator one more than in 2015 and twelve of these areas fall within the former Dorset South SUG area and one in Mid Dorset SUG. Nine Lower Super Output Areas are within the top 10% most deprived nationally, all within either Weymouth or Portland.

LSOA code (2011)	Dorset LSOA Name	LSOA name (2011)	Local Authority District code (2019)	Local Authority District name (2019)	Health Deprivation and Disability Rank (where 1 is most deprived)	Health Deprivation and Disability Decile (where 1 is most deprived 10% of LSOAs)
E01020552	Littlemoor West	Weymouth and Portland 001B	E0600005	Dorset	337	1
E01020554	Melcombe Regis Town Centre	Weymouth and Portland 004B	E0600005	Dorset	398	1
E01020575	Westham North Westhaven	Weymouth and Portland 003B	E0600005	Dorset	883	1
E01020555	Melcombe Regis Park District	Weymouth and Portland 004C	E0600005	Dorset	929	1
E01020556	Melcombe Regis Lodmoor Hill	Weymouth and Portland 004D	E0600005	Dorset	1,599	1
E01020553	Melcombe Regis Carlton Road	Weymouth and Portland 004A	E0600005	Dorset	1,982	1
E01020569	Fortuneswell North	Weymouth and Portland 008D	E0600005	Dorset	2,475	1
E01020563	Tophill East Grove Road	Weymouth and Portland 008A	E0600005	Dorset	2,556	1
E01020582	Rodwell and Chapelhay	Weymouth and Portland 004F	E0600005	Dorset	3,122	1
E01032644	Dorchester Town Centre	West Dorset 009H	E0600005	Dorset	3,527	2
E01020573	Westham East Knightsdale Road	Weymouth and Portland 005B	E0600005	Dorset	3,897	2
E01020574	Westham North Goldcroft Road	Weymouth and Portland 003A	E0600005	Dorset	5,397	2
E01020564	Weston West	Weymouth and Portland 009B	E0600005	Dorset	6,499	2

The least deprived in the Council area is Milton in Dorset North SUG followed by Ferndown Golf Links and Colehill The Vineries Dorset East SUG area.

**Health Deprivation & Disability Domain 2019
National Rank**



THIS MAP IS NOT DEFINITIVE AND HAS NO LEGAL STATUS

Dorset Council - Health Deprivation & Disability Domain 2019 - National Ranking

Ref:
Date: 2019
Scale 1:377062
Drawn By:
Cent X: 375287
Cent Y: 99179



© Crown Copyright and database rights 2019 Ordnance Survey 0100050963.
You are permitted to use this data solely to enable you to respond to, or interact with, the organisation that provided you with the data. You are not permitted to copy, sub-licence, distribute or sell any of this data to third parties in any form.
Aerial Photography © LK Perspectives 2002 & © Getmapping 2005, 2009 & 2014
Getmapping Plc and BlueSky International Limited [2017]

Education, Skills and Training Deprivation Domain

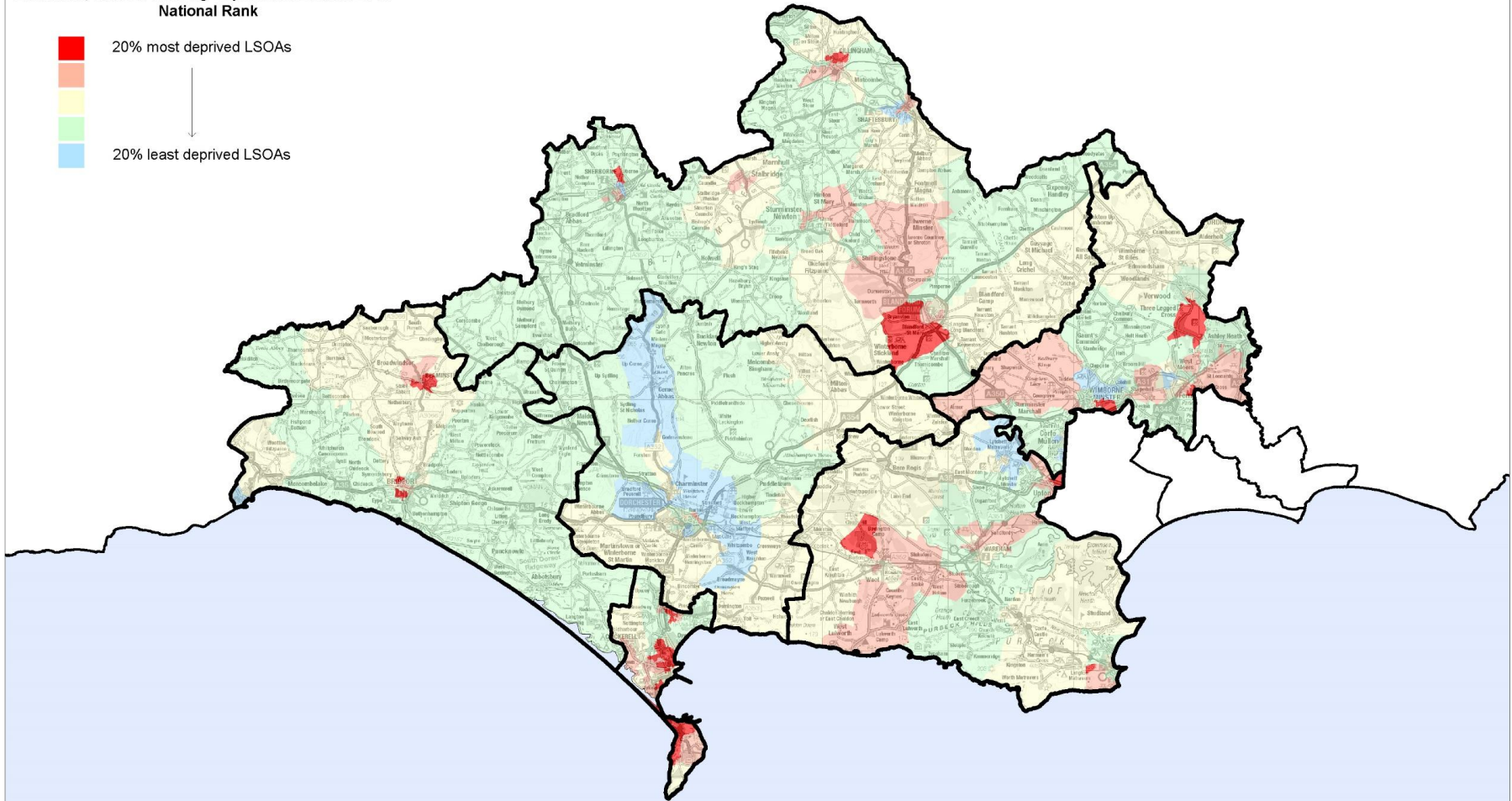
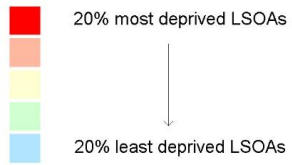
This domain captures the extent of deprivation in terms of education, skills and training in a local area. The indicators are structured into two sub domains: one relating to education deprivation for children/young people in the area, and one relating to lack of skills and qualifications among a sub-set of the working age adult population.

Twenty-five areas in Dorset fall into the top 20% most deprived nationally for education deprivation up from twenty in 2015. The most deprived area in the county for education deprivation is Fortuneswell North in Dorset South SUG area followed by Littlemoor West also in Dorset South.

LSOA code (2011)	Dorset LSOA Name	LSOA name (2011)	Local Authority District code (2019)	Local Authority District name (2019)	Education, Skills and Training Rank (where 1 is most deprived)	Education, Skills and Training Decile (where 1 is most deprived 10% of LSOAs)
E01020569	Fortuneswell North	Weymouth and Portland 008D	E06000059	Dorset	1,125	1
E01020552	Littlemoor West	Weymouth and Portland 001B	E06000059	Dorset	1,162	1
E01020575	Westham North Westhaven	Weymouth and Portland 003B	E06000059	Dorset	1,559	1
E01020499	Bridport Court Orchard	West Dorset 006B	E06000059	Dorset	1,822	1
E01020582	Rodwell and Chapelhay	Weymouth and Portland 004F	E06000059	Dorset	1,829	1
E01020555	Melcombe Regis Park District	Weymouth and Portland 004C	E06000059	Dorset	2,798	1
E01020393	Ferndown Tricketts Cross East	East Dorset 008D	E06000059	Dorset	2,854	1
E01020554	Melcombe Regis Town Centre	Weymouth and Portland 004B	E06000059	Dorset	4,008	2
E01020564	Weston West	Weymouth and Portland 009B	E06000059	Dorset	4,019	2
E01020543	Sherborne East Gryphon	West Dorset 001B	E06000059	Dorset	4,154	2
E01033200	Fortuneswell South	Weymouth and Portland 008E	E06000059	Dorset	4,700	2
E01020553	Melcombe Regis Carlton Road	Weymouth and Portland 004A	E06000059	Dorset	4,786	2
E01020412	Verwood Potterne & Woolsbridge	East Dorset 003B	E06000059	Dorset	4,911	2
E01020471	Upton Wood	Purbeck 002A	E06000059	Dorset	5,128	2
E01020574	Westham North Goldcroft Road	Weymouth and Portland 003A	E06000059	Dorset	5,161	2
E01020483	Swanage Herston	Purbeck 006F	E06000059	Dorset	5,408	2
E01020427	Wimborne Leigh Park	East Dorset 010B	E06000059	Dorset	5,532	2
E01020502	Bridport Skilling	West Dorset 008A	E06000059	Dorset	5,541	2
E01020411	Three Legged Cross	East Dorset 003A	E06000059	Dorset	5,569	2
E01020496	Beaminster South	West Dorset 003C	E06000059	Dorset	5,750	2
E01020493	Bovington Camp	Purbeck 004E	E06000059	Dorset	6,244	2
E01020573	Westham East Knightsdale Road	Weymouth and Portland 005B	E06000059	Dorset	6,251	2
E01020452	Portman	North Dorset 006B	E06000059	Dorset	6,389	2
E01020585	Weymouth West Doncaster Rd	Weymouth and Portland 006C	E06000059	Dorset	6,394	2
E01020447	Gillingham Lodborne	North Dorset 001B	E06000059	Dorset	6,405	2

Fourteen areas in the county are within the 20% least deprived for education deprivation. The least deprived in the county is Dorchester Manor Park in the Mid Dorset SUG area followed by Greenhill and Furzehill in the Dorset East SUG area.

**Education, Skills & Training Deprivation Domain 2019
National Rank**



THIS MAP IS NOT DEFINITIVE AND HAS NO LEGAL STATUS

Dorset Council - Education, Skills & Training Deprivation Domain 2019 - National Ranking

Ref:
Date: 2019
Scale 1:377062
Drawn By:
Cent X: 375287
Cent Y: 99179



© Crown Copyright and database rights 2019 Ordnance Survey 0100080963. You are permitted to use this data solely to enable you to respond to, or interact with, the organisation that provided you with the data. You are not permitted to copy, sub-licence, distribute or sell any of this data to third parties in any form.
Aerial Photography © LKIPerspectives 2002 & © Getmapping 2005, 2009 & 2014
Getmapping Plc and Bluesky International Limited [2017]

Barriers to Housing and Services Domain

The purpose of this domain is to measure barriers to housing and key local services.

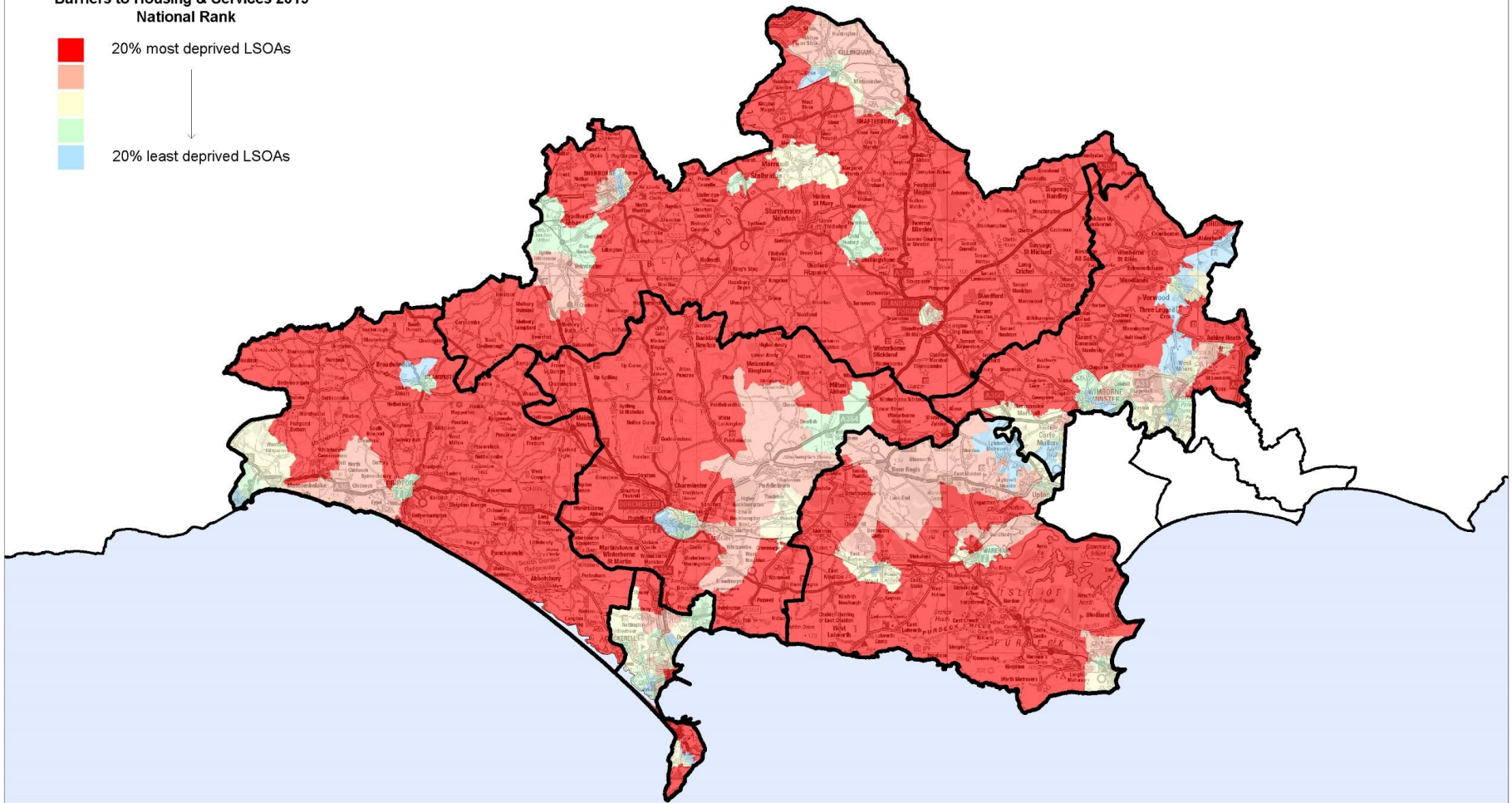
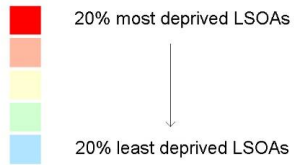
This is a significant area of deprivation for Dorset. Sixty-six areas are within the top 20% most deprived nationally, down from sixty-seven in 2015. This high number reflects the rurality of the county and more specifically the greater distance from services, which makes up a significant proportion of this domain. Dorset North, Dorset West have some of the most deprived areas for this domain. However, the most deprived area in the county is West Purbeck in South East Dorset, which is the 121st most deprived area nationally out of 32,844 followed by Lower Tarrants and Blandford Camp in Dorset North and Allen Valley in the Dorset East SUG area. These three areas fall into the top 1% most deprived nationally.

Top 1% most deprived nationally

LSOA code (2011)	Dorset LSOA Name	LSOA name (2011)	Local Authority District code (2019)	Local Authority District name (2019)	Barriers to Housing and Services Rank (where 1 is most deprived)	Barriers to Housing and Services Decile (where 1 is most deprived 10% of LSOAs)
E01020489	West Purbeck	Purbeck 004A	E06000059	Dorset	121	1
E01033159	The Lower Tarrants and Blandford Camp	North Dorset 006F	E06000059	Dorset	135	1
E01020396	Allen Valley	East Dorset 005A	E06000059	Dorset	311	1

Twenty-nine areas fall into the 20% least deprived nationally within Dorset. Eleven of these areas are within the built-up area of East Dorset. The least deprived in Dorset for this indicator is Alderholt West in the former borough of East Dorset.

**Barriers to Housing & Services 2019
National Rank**



THIS MAP IS NOT DEFINITIVE AND HAS NO LEGAL STATUS

Dorset Council - Barriers to Housing & Services Domain 2019 - National Ranking

Ref:
Date: 2019
Scale 1:377062
Drawn By:
Cent X: 375287
Cent Y: 99179



© Crown Copyright and database rights 2019 Ordnance Survey 0100080963. You are permitted to use this data solely to enable you to respond to, or interact with, the organisation that provided you with the data. You are not permitted to copy, sub-licence, distribute or sell any of this data to third parties in any form.
 Aerial Photography © LK Perspectives 2002 & © Getmapping 2005, 2009 & 2014
 Getmapping Plc and Bluesky International Limited [2017]

Crime Domain

This domain measures the rate of recorded crime for four major crime types, representing the risk of personal and material victimisation at a small area level. The four major crime types covered are:

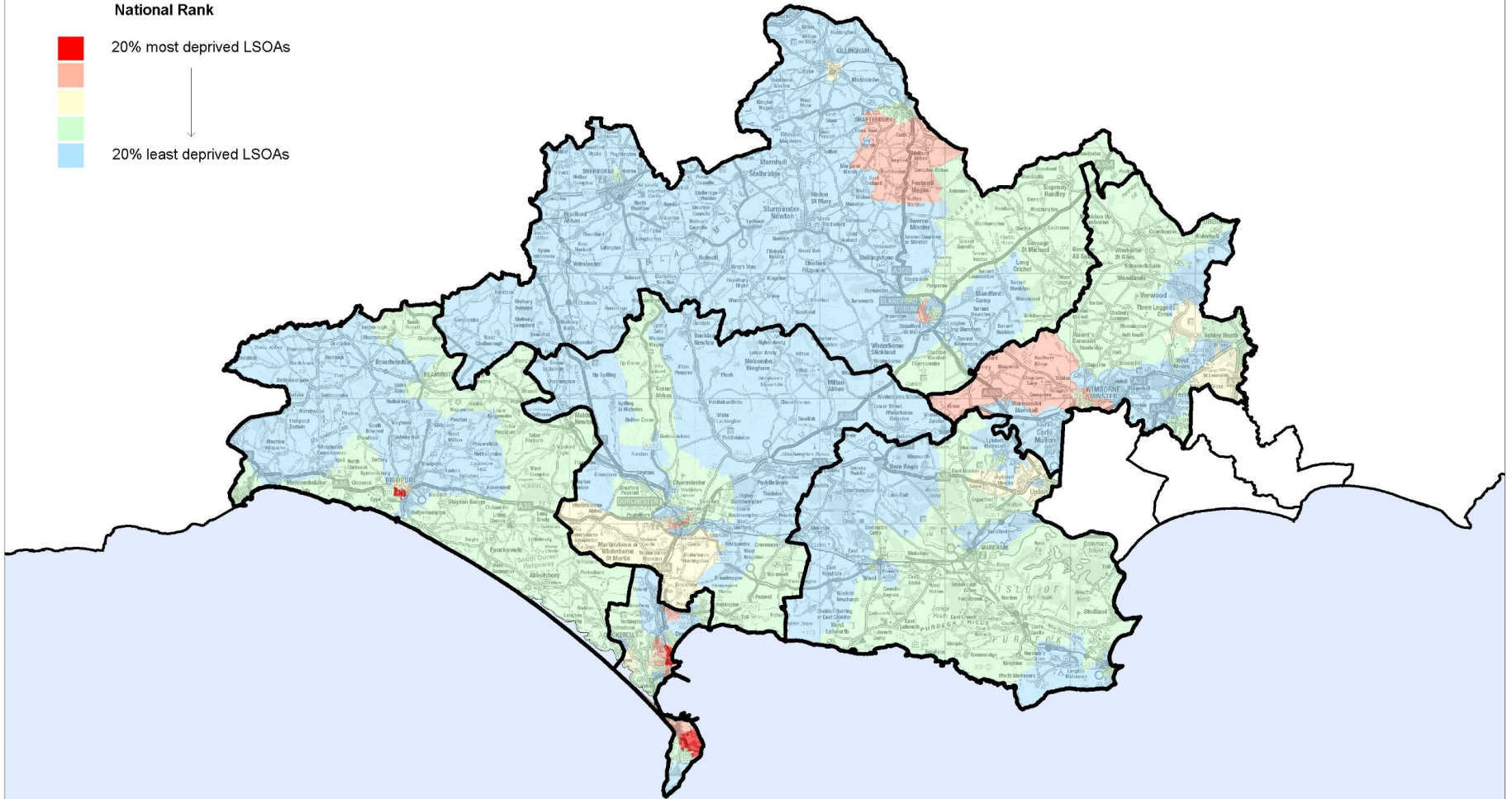
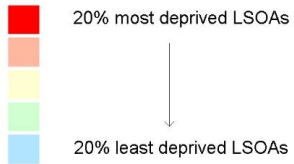
- Burglary
- Theft
- Criminal Damage
- Violence

Five areas in Dorset fall into the top 20% most deprived nationally for crime which is the same as in 2015. Four of these areas are within Weymouth in Dorset South and one in Bridport within Dorset West SUG area. The most deprived in Dorset is Melcombe Regis Town Centre which is within the top 1% nationally for Crime deprivation.

LSOA code (2011)	Dorset LSOA Name	LSOA name (2011)	Local Authority District code (2019)	Local Authority District name (2019)	Crime Rank (where 1 is most deprived)	Crime Decile (where 1 is most deprived 10% of LSOAs)
E01020554	Melcombe Regis Town Centre	Weymouth and Portland 004B	E06000059	Dorset	303	1
E01020563	Tophill East Grove Road	Weymouth and Portland 008A	E06000059	Dorset	2,627	1
E01020555	Melcombe Regis Park District	Weymouth and Portland 004C	E06000059	Dorset	3,635	2
E01020502	Bridport Skilling	West Dorset 008A	E06000059	Dorset	6,310	2
E01020553	Melcombe Regis Carlton Road	Weymouth and Portland 004A	E06000059	Dorset	6,501	2

One hundred and twenty-nine areas in Dorset (60%) are within the 20% least deprived nationally for crime deprivation. The least deprived area for crime in the county is Blandford Camp in Dorset North SUG area followed by Verwood Dewlands and Ferndown Pinewood both in Dorset East SUG area.

**Crime Domain 2019
National Rank**



THIS MAP IS NOT DEFINITIVE AND HAS NO LEGAL STATUS

Dorset Council - Crime Domain 2019 - National Ranking

Ref:
Date: 2019
Scale: 1:377062
Drawn By:
Cent X: 375287
Cent Y: 99179



© Crown Copyright and database rights 2019 Ordnance Survey 0100050963.
You are permitted to use this data solely to enable you to respond to, or interact with, the organisation that provided you with the data. You are not permitted to copy, sub-licence, distribute or sell any of this data to third parties in any form.

Aerial Photography © LK Perspectives 2002 & © Getmapping 2005, 2009 & 2014
Getmapping Plc and BlueSky International Limited [2017]

The Living Environment Deprivation Domain

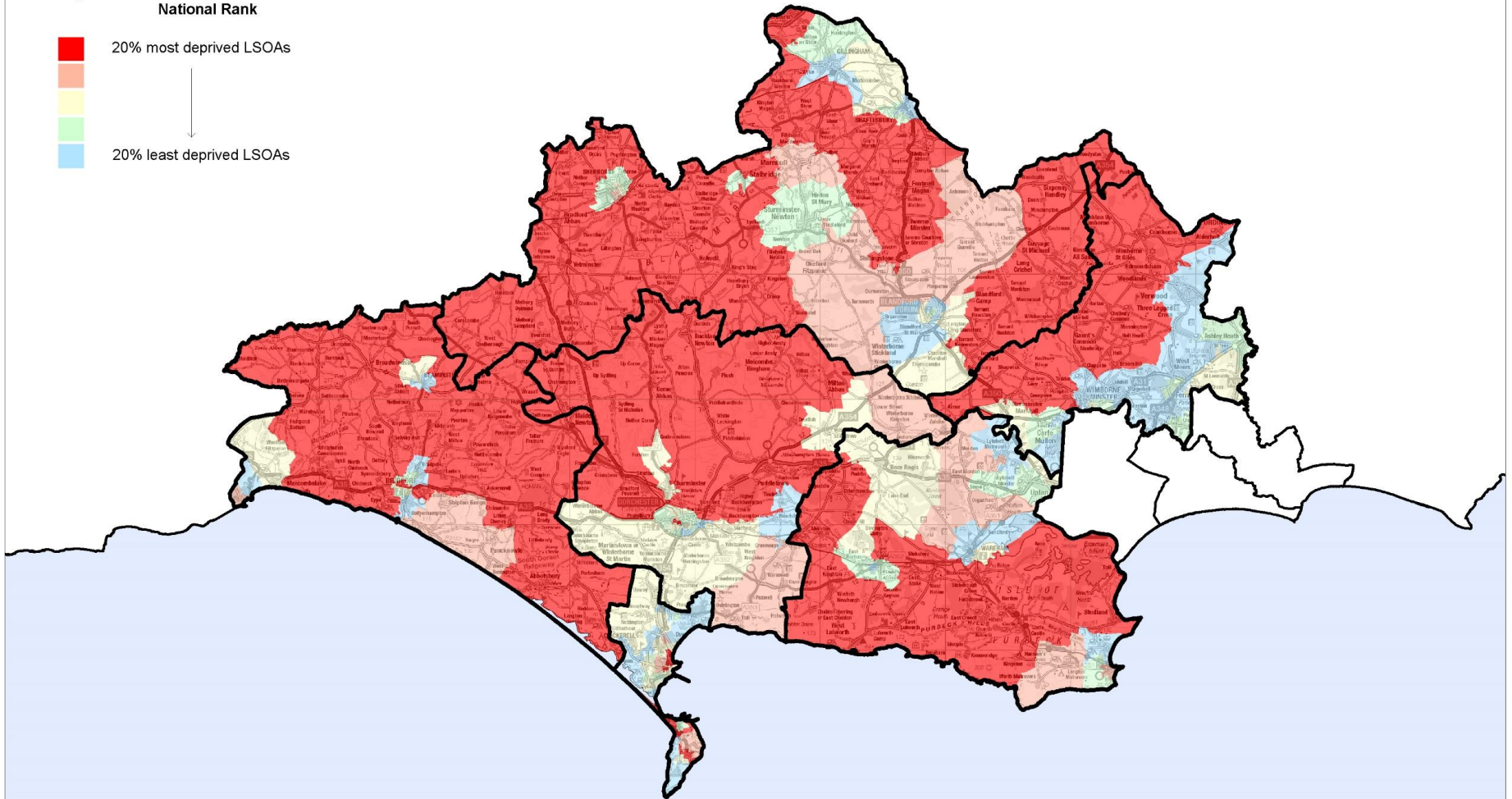
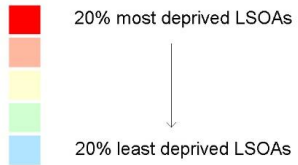
This domain focuses on deprivation with respect to the characteristics of the living environment. It comprises two sub-domains: the 'indoors' living environment which measures the quality of housing, and the 'outdoors' living environment which contains two measures about air quality and road traffic accidents.

Forty-one areas fall into the top 20% most deprived nationally for this indicator and thirty-one in the top 10% most deprived. The most deprived in the county is Allen Valley (Dorset East SUG) which falls into the top 1% nationally for deprivation.

LSOA code (2011)	Dorset LSOA Name	LSOA name (2011)	Local Authority District code (2019)	Local Authority District name (2019)	Living Environment Rank (where 1 is most deprived)	Living Environment Decile (where 1 is most deprived 10% of LSOAs)
E01020396	Allen Valley	East Dorset 005A	E06000059	Dorset	46	1
E01020535	Marshwood Vale	West Dorset 005D	E06000059	Dorset	169	1
E01020512	Chesil Bank	West Dorset 012A	E06000059	Dorset	663	1
E01020534	Maiden Newton	West Dorset 003F	E06000059	Dorset	727	1
E01020389	Crane	East Dorset 001C	E06000059	Dorset	776	1
E01020410	Pamphill & Shapwick	East Dorset 005D	E06000059	Dorset	1,081	1
E01020517	Chideock & Symondsburly	West Dorset 007B	E06000059	Dorset	1,093	1
E01020530	Halstock	West Dorset 003E	E06000059	Dorset	1,118	1
E01020531	Loders	West Dorset 007C	E06000059	Dorset	1,303	1
E01020490	Winfrith	Purbeck 004B	E06000059	Dorset	1,406	1
E01020536	Netherbury	West Dorset 007D	E06000059	Dorset	1,421	1
E01020541	Queen Thorne	West Dorset 002C	E06000059	Dorset	1,424	1
E01020460	The Beacon	North Dorset 005D	E06000059	Dorset	1,664	1
E01020554	Melcombe Regis Town Centre	Weymouth and Portland 004B	E06000059	Dorset	1,770	1
E01020506	Broadwindsor	West Dorset 003D	E06000059	Dorset	1,776	1
E01020466	Castle	Purbeck 005A	E06000059	Dorset	1,821	1
E01020462	The Stours	North Dorset 002D	E06000059	Dorset	1,889	1
E01020529	Frome Valley	West Dorset 004C	E06000059	Dorset	1,929	1
E01020555	Melcombe Regis Park District	Weymouth and Portland 004C	E06000059	Dorset	2,091	1
E01020431	Milton Abbas & Hilton	North Dorset 008B	E06000059	Dorset	2,182	1
E01020497	Bradford Abbas	West Dorset 002A	E06000059	Dorset	2,410	1
E01020397	Sixpenny Handley	East Dorset 001D	E06000059	Dorset	2,473	1
E01020494	Beaminster Environs	West Dorset 003A	E06000059	Dorset	2,488	1
E01020539	Piddle Valley	West Dorset 004D	E06000059	Dorset	2,573	1
E01020440	Bourton & District	North Dorset 002A	E06000059	Dorset	2,684	1
E01020489	West Purbeck	Purbeck 004A	E06000059	Dorset	2,703	1
E01020508	Cam Vale	West Dorset 002B	E06000059	Dorset	2,727	1
E01020398	Holt	East Dorset 005B	E06000059	Dorset	2,981	1
E01020448	Lydden Vale	North Dorset 008E	E06000059	Dorset	3,098	1
E01020467	Creech Barrow	Purbeck 005B	E06000059	Dorset	3,184	1
E01020509	Cerne Valley	West Dorset 004A	E06000059	Dorset	3,221	1
E01020550	Yetminster	West Dorset 002D	E06000059	Dorset	3,330	2
E01033159	The Lower Tarrants and Blandford Camp	North Dorset 006F	E06000059	Dorset	3,523	2
E01020540	Puddletown	West Dorset 004E	E06000059	Dorset	3,676	2
E01020582	Rodwell and Chapelhay	Weymouth and Portland 004F	E06000059	Dorset	5,008	2
E01033200	Fortuneswell South	Weymouth and Portland 008E	E06000059	Dorset	5,255	2
E01020500	Bridport Centre North	West Dorset 006C	E06000059	Dorset	5,520	2
E01020562	Tophill East Easton	Weymouth and Portland 009A	E06000059	Dorset	5,793	2
E01020433	Stalbridge Environs	North Dorset 004A	E06000059	Dorset	5,810	2
E01020445	The Iwernes	North Dorset 005B	E06000059	Dorset	5,996	2
E01020527	Dorchester Victoria Park	West Dorset 009D	E06000059	Dorset	6,193	2

Eighty-four areas fall into the 20% least deprived nationally for this deprivation indicator. The least deprived in the council area is Verwood Ebblake, followed by Alderholt East and Colehill Cannon Hill all in Dorset East SUG. Dorset East dominates the 20% least deprived nationally with over half the areas coming from this SUG area.

**Living Environment Deprivation Domain 2019
National Rank**



THIS MAP IS NOT DEFINITIVE AND HAS NO LEGAL STATUS

Dorset Council - Living Environment Deprivation Domain 2019 - National Ranking

Ref:
Date: 2019
Scale: 1:377062
Drawn By:
Cent X: 375287
Cent Y: 99179



© Crown Copyright and database rights 2019 Ordnance Survey 0100009063.
You are permitted to use this data solely to enable you to respond to, or interact with, the organisation that provided you with the data. You are not permitted to copy, sub-licence, distribute or sell any of this data to third parties in any form.
Aerial Photography © LK Perspectives 2002 & © Getmapping 2005, 2009 & 2014
Getmapping Plc and BlueSky International Limited [2017]

Supplementary Indices – Income Deprivation affecting Children Index (IDACI) and Income Deprivation affecting Older People Index IDAOPI

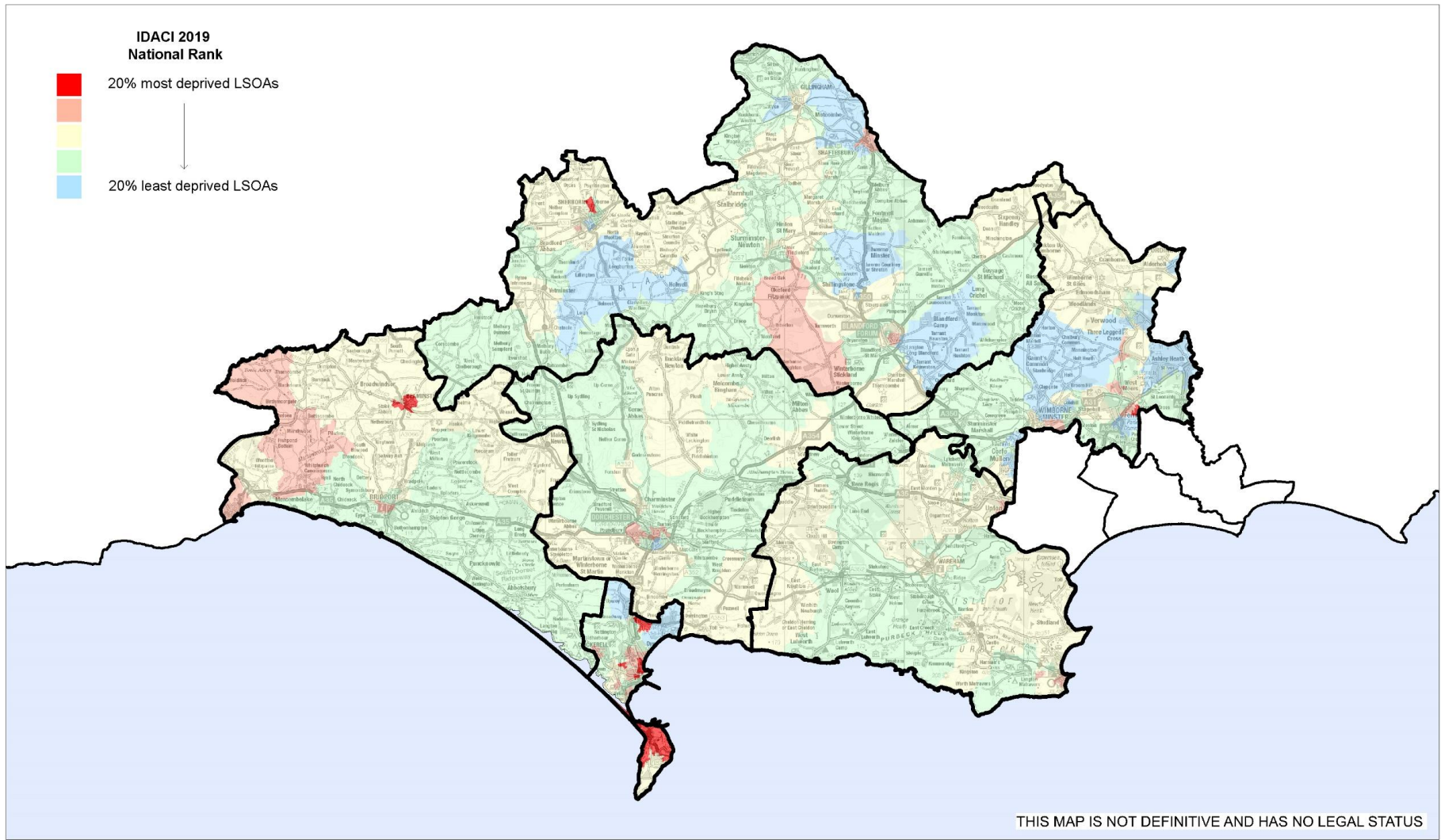
Income Deprivation affecting Children Index (IDACI)

As in the ID2015, a supplementary index – Income Deprivation Affecting Children Index– has been produced alongside the Income Deprivation Domain. This covers only children aged 0-15 living in income deprived households. The Income Deprivation Affecting Children Index is expressed as the proportion of all children aged 0-15 living in income deprived families.

Thirteen areas in Dorset fall into the top 20% most deprived nationally for this indicator, up from ten in 2015. Eleven areas are within Dorset South SUG area.

LSOA code (2011)	Dorset LSOA Name	LSOA name (2011)	Local Authority District code (2019)	Local Authority District name (2019)	Income Deprivation Affecting Children Index (IDACI) Rank (where 1 is most deprived)	Income Deprivation Affecting Children Index (IDACI) Decile (where 1 is most deprived 10% of LSOAs)
E01020569	Fortuneswell North	Weymouth and Portland 008D	E06000059	Dorset	1,092	1
E01020552	Littlemoor West	Weymouth and Portland 001B	E06000059	Dorset	1,782	1
E01020563	Tophill East Grove Road	Weymouth and Portland 008A	E06000059	Dorset	2,620	1
E01020575	Westham North Westhaven	Weymouth and Portland 003B	E06000059	Dorset	2,738	1
E01020582	Rodwell and Chapelhay	Weymouth and Portland 004F	E06000059	Dorset	4,378	2
E01033200	Fortuneswell South	Weymouth and Portland 008E	E06000059	Dorset	4,744	2
E01020543	Sherborne East Gryphon	West Dorset 001B	E06000059	Dorset	5,096	2
E01020564	Weston West	Weymouth and Portland 009B	E06000059	Dorset	5,502	2
E01020393	Ferndown Tricketts Cross East	East Dorset 008D	E06000059	Dorset	5,610	2
E01020551	Littlemoor East	Weymouth and Portland 001A	E06000059	Dorset	5,899	2
E01020554	Melcombe Regis Town Centre	Weymouth and Portland 004B	E06000059	Dorset	5,962	2
E01020555	Melcombe Regis Park District	Weymouth and Portland 004C	E06000059	Dorset	6,000	2
E01020496	Beaminster South	West Dorset 003C	E06000059	Dorset	6,356	2

Thirty-four areas fall into the 20% least deprived nationally for this deprivation indicator. The least deprived in the council area is Colehill Cannon Hill in Dorset East SUG area, followed by Blandford Camp in North Dorset SUG. Dorset East dominates the 20% least deprived nationally with well over half the areas coming from this SUG area.



Dorset Council - Income Deprivation Affecting Children Index (IDACI) 2019 National Ranking

Ref:
Date: 2019
Scale: 1:377062
Drawn By:
Cent X: 375287
Cent Y: 99179



© Crown Copyright and database rights 2019 Ordnance Survey 0100080963
 You are permitted to use this data solely to enable you to respond to, or interact with, the organisation that provided you with the data. You are not permitted to copy, sub-licence, distribute or sell any of this data to third parties in any form.
 Aerial Photography © UK Perspectives 2002 & © Getmapping 2005, 2009 & 2014
 Getmapping Plc and Bluesky International Limited [2017]

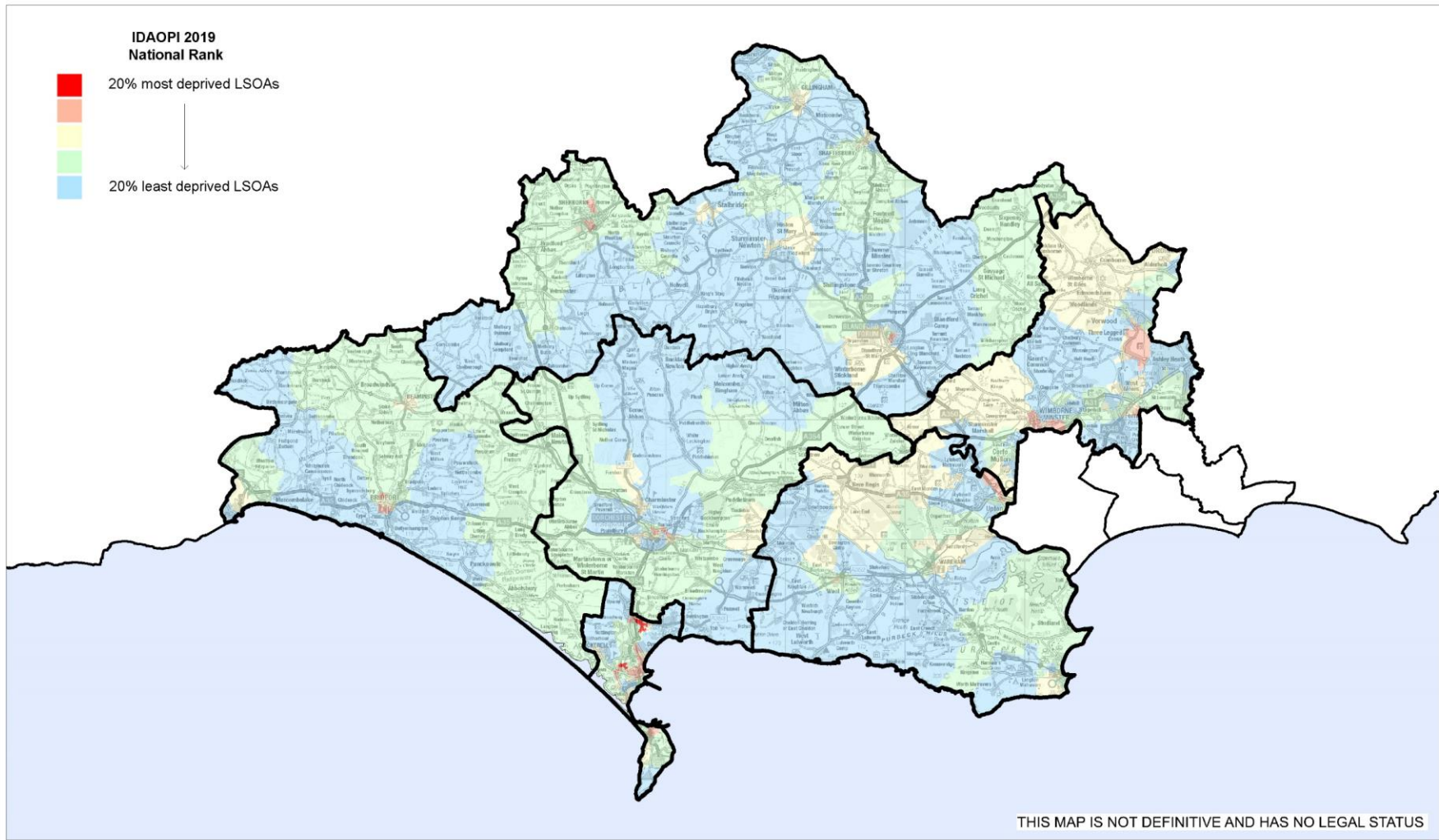
Income Deprivation affecting Older People Index IDAOPI

A second supplementary index, also produced in 2019, is the Income Deprivation Affecting Older People Index. This index represents income deprivation affecting older people, expressed as the proportion of adults aged 60 or over living in Income Support or income based Jobseeker's Allowance or Pension Credit (Guarantee) families.

Two areas in Dorset fall into the top 20% most deprived nationally for this indicator, down from three in 2015. Both of these areas are in Dorset South - Littlemoor West and Westham North Westhaven.

LSOA code (2011)	Dorset LSOA Name	LSOA name (2011)	Local Authority District code (2019)	Local Authority District name (2019)	Income Deprivation Affecting Older People (IDAOPI) Rank (where 1 is most deprived)	Income Deprivation Affecting Older People (IDAOPI) Decile (where 1 is most deprived 10% of LSOAs)
E01020552	Littlemoor West	Weymouth and Portland 001B	E06000059	Dorset	1,664	1
E01020575	Westham North Westhaven	Weymouth and Portland 003B	E06000059	Dorset	4,365	2

Eighty areas fall into the 20% least deprived nationally for this deprivation indicator. The least deprived in the Council area is Colehill Cannon Hill I followed by Colehill The Vineries both in Dorset East SUG area.



**Dorset Council - Income Deprivation Affecting Older People Index (IDAOPi) 2019
National Ranking**

Ref:
Date: 2019
Scale: 1:377062
Drawn By:
Cent X: 375287
Cent Y: 99179



© Crown Copyright and database rights 2019 Ordnance Survey 0100080963
 You are permitted to use this data solely to enable you to respond to, or interact with, the organisation that provided you with the data. You are not permitted to copy, sub-licence, distribute or sell any of this data to third parties in any form.
 Aerial Photography © LKIPerspective 2002 & © Getmapping 2005, 2009 & 2014
 Getmapping Plc and BlueSky International Limited [2017]

The data and maps presented in this document represent a summary of the information made available by the department for communities and local government in its release of the Indices of Deprivation 2019.

The results for Dorset are also available as maps on the research and insight's website <https://www.dorsetcouncil.gov.uk/statistics>. This section of the website also includes maps and data presented at LSOA level for each of the County's six sub unitary geographies and a bitesize headline bulletin. The information available also includes the sub-domains listed at the front of this document.