

The English Index of Multiple Deprivation (IMD) 2015

Welcome to this **ourcommunities** bitesize bulletin on the Indices of Deprivation 2015. This edition will include the latest release of the official measure of relative deprivation for small areas in England. It will focus on Dorset, what's changed since the last release in 2010 and how the data can be used.

The index is measured at a small area level (called Lower-layer Super Output Areas –LSOAs) in England with an average of 1,500 residents in each. The data is also available at a Local Authority level.

In a **national** context **Dorset** as a whole does not score highly in relation to deprivation.



However there are pockets of deprivation

- **Twelve areas** in Dorset are in the **top 20%** most deprived nationally
- **Three quarters** of those are within **Weymouth & Portland**
- **Four** of these **Weymouth & Portland** areas are in the **top 10%** most deprived nationally: **Fortuneswell North, Melcombe Regis Town Centre, Park District and Littlemoor West.**

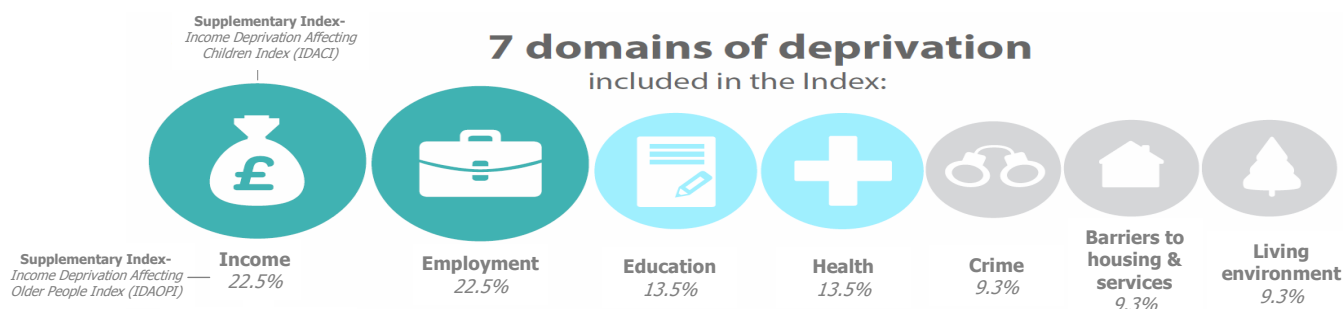
Dorset remains a county of contrasts

- **Weymouth & Portland** is one of the **top third most deprived** Local Authorities in England
- All other Dorset Districts and Boroughs in the **least deprived third**, highlighting inequality across the county.
- Over **half** of **East Dorset's** LSOAs are within the **least deprived** areas of the country
- Just under **half** of the areas in the county are **access to services deprived.**

Changes over time

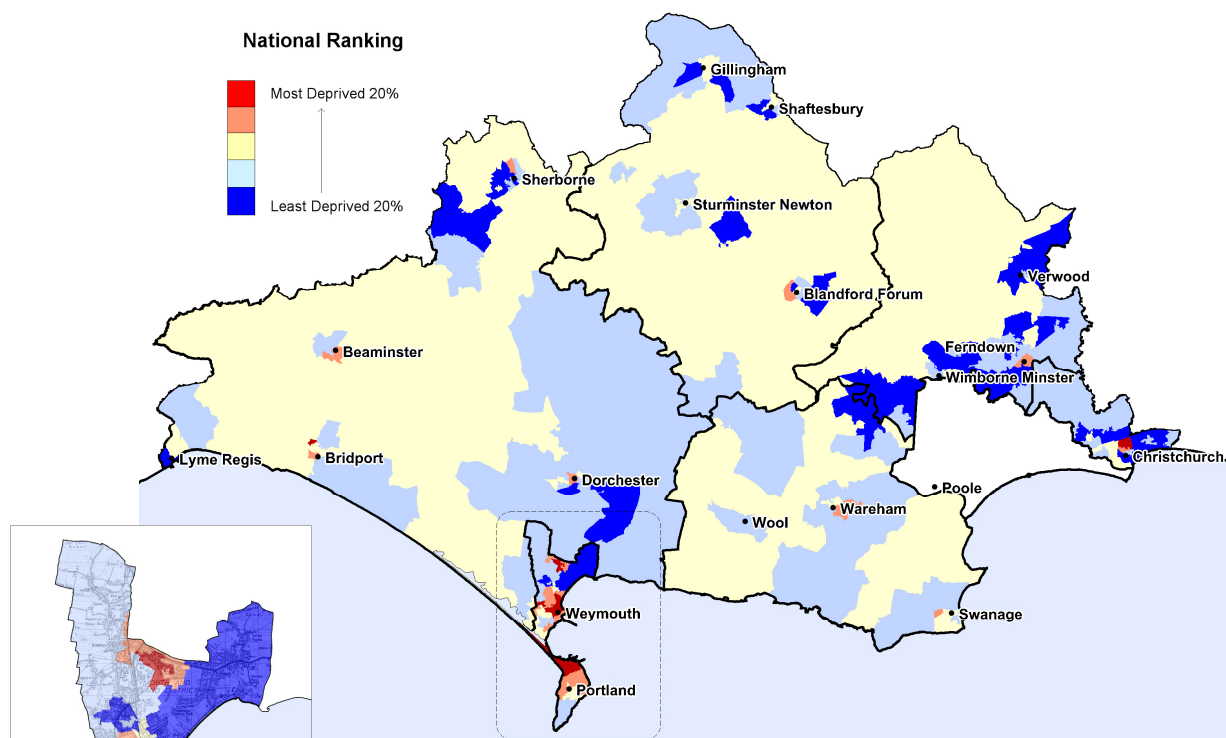
- **Fortuneswell North** in **Weymouth & Portland** is now the most deprived area in Dorset
- **Somerford West** in **Christchurch** returns to the top 20% most deprived
- **Bridport Skilling** in **West Dorset** and **Melcombe Regis Lodmoor Hill** in **Weymouth & Portland** drop out of the 20% most deprived.

The Index of Deprivation includes **seven domains** that together, in different proportions, make-up the IMD. Each domain is also measured separately.





Deprivation in Dorset - focus on Weymouth & Portland - IMD

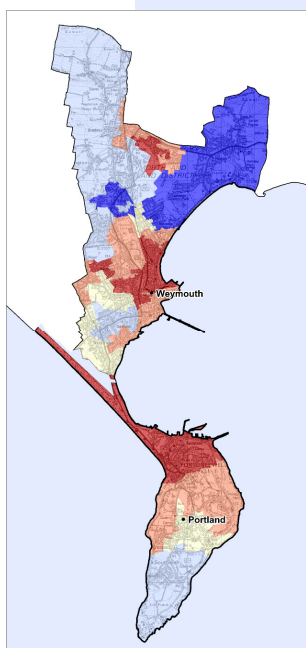


Why does it matter?

Deprivation has a significant impact on health and wellbeing. Dorset's areas of deprivation are largely located in the most urban locations - in particular Weymouth & Portland.

Many council services are disproportionately focused on areas of deprivation. The impact on households suffering from deprivation lead to demands on social care and health as well as educational issues such as increased likelihood of absenteeism, children in care and those with additional needs.

A high proportion of Dorset's rural communities could also be considered deprived in terms of barriers to housing and essential services.



HOW CAN IT BE USED?



- ✓ comparing small areas across England
- ✓ identifying the most deprived small areas
- ✓ exploring the domains (or types) of deprivation
- ✓ comparing larger areas e.g. local authorities
- ✓ looking at changes in relative deprivation between versions (i.e. changes in ranks)
- ✗ quantifying how deprived a small area is
- ✗ identifying deprived people
- ✗ saying how affluent a place is
- ✗ comparing with small areas in other UK countries
- ✗ measuring real change in deprivation over time

For those suffering deprivation in rural areas, poor access to services can exacerbate problems that they already face. As the number of older people living in rural areas grows, the challenge of access to facilities and pressure on health and care services will accelerate.

This bulletin was created by: Consultation and Research, Chief Executive's Dept using the 2015 Indices of Deprivation released September 2015. For more information contact Pete Jackson 01305 224614 p.p.jackson@dorsetcc.gov.uk or visit www.dorsetforyou.com/statistics