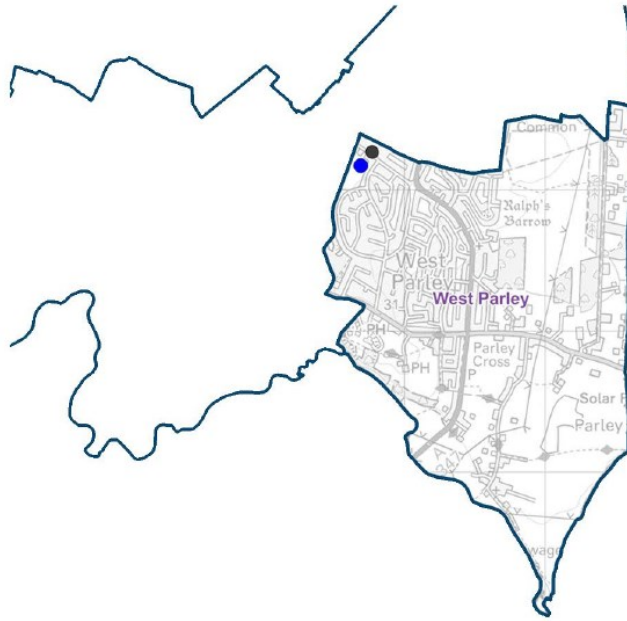


# Ward Profile West Parley Ward

## West Parley Ward:



- GP Surgery ● 2
- Hospital ● 0
- Dorset Council Library ● 0
- Community Library ● 0
- Primary School ● 1
- Middle School ● 0
- Secondary School ● 0
- Special School ● 0
- Pupil Referral Unit ● 0



**1 Councillor**



**2,998 Electors**



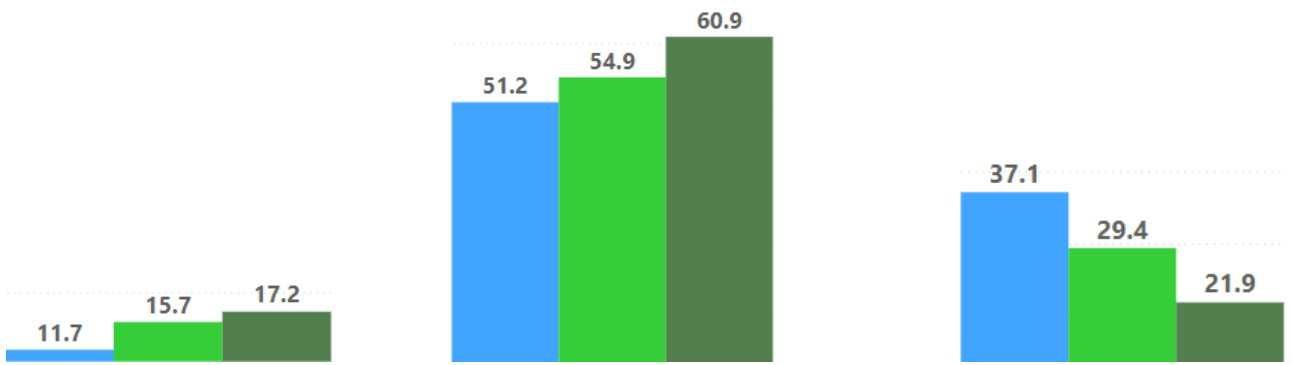
**1,673 Residential Properties**

### West Parley is comprised of the following Parishes:

West Parley Ward is wholly comprised of Parley Parish

● West Parley ● Dorset ● Bournemouth, Christchurch and Poole

### Age Profile:



% of Population Aged (0 to 15)

% of Population Aged (16 to 64)

% of Population Aged (65+)

Total Ward Population



**3,560**

50% are Male

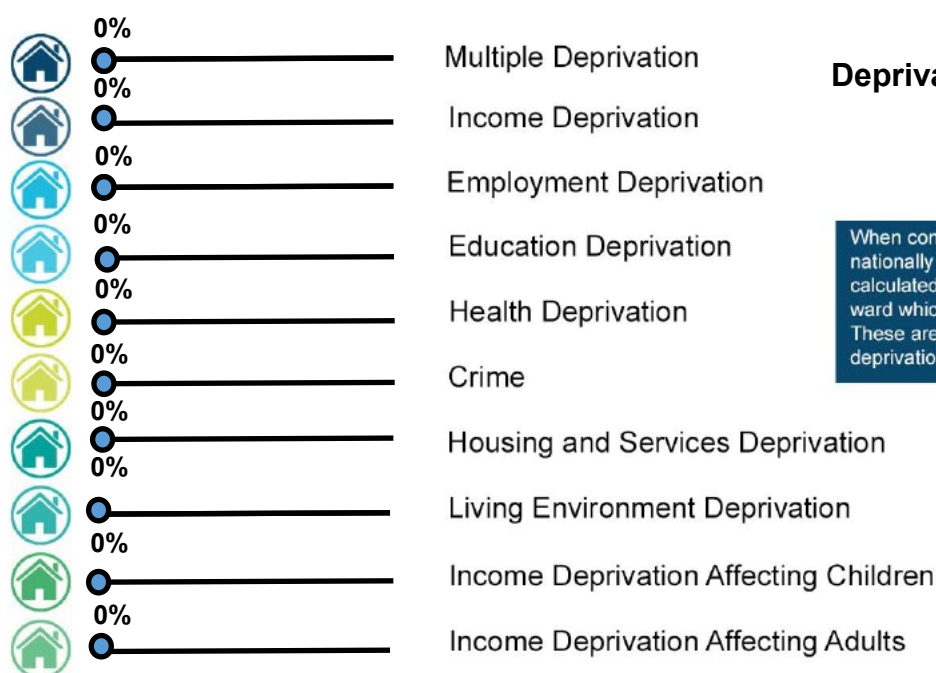


50% are Female



# Ward Profile West Parley Ward

Demographics	West Parley Ward	Dorset Council	BCP
% of Population White British	95.4	93.9	82.4
% of Population Ethnic Minority	4.6	6.1	17.6
% of Population Who Describe Health Good/Very Good	82	80.7	81.6
% of Population Who Describe Health Bad/Very Bad	3.9	5.1	5.3
% of Population with a long term illness/disability	17.5	19.8	18.5
% of Population within Communal Establishments	0.4	2.1	2.6
% of Population Providing Unpaid Care	11.4	9.8	8.8
% of Population Whose Main Language is not English	0.8	1.9	8.8
Claimants Female - % of 16-64 Population	0.3	1.1	1.7
Claimants Male - % of 16-64 Population	0.6	1.3	2.3
Claimant Total - % of 16-64 Population	0.8	1.0	2.0



## Deprivation in West Parley Ward

When considering Deprivation, areas within the top 20% nationally are of most concern. In this measure we have calculated the proportion of households in areas in each ward which fall into the top 20% nationally for each domain. These are areas that are considered as suffering severe deprivation in a national context within that category.

## Mosaic Data for West Parley Ward

Ward MOSAIC Top 5	West Parley Ward
B Prestige Positions	50%
E Senior Security	28%
G Domestic Success	10%
L Vintage Value	4%
D Rural Reality	3%

Mosaic data is produced by Experian and segments household into sixteen different 'Groups' based on their life-style, preferences, likely income and social interests. The data here represents the top 5 Mosaic Groups in each Dorset Ward.