

The Indices of Deprivation 2025 a summary report for Dorset Council

This English Indices of Deprivation helps identify and prioritise areas to assist the government and other agencies both national and local in narrowing the gap between deprived neighbourhoods and the rest of the country. The Indices have been produced seven times - 2000, 2004, 2007, 2010, 2015, 2019 and now 2025.

The data for 2025 was released at the end of October 2025¹.

The results are provided at Lower Super Output Area Level (LSOA).² This level of geography is considered to be the most appropriate for measuring deprivation at a smaller level across the country.

The results provided in this report for Dorset Council look at the Index of Multiple Deprivation – a composite deprivation indicator and each of its seven constituent domains. The report also considers two supplementary indicators. As well as the IMD and the seven domains, data from the Indices of Deprivation also includes a number of sub-domains; these have not been included in this report but are available by request from the Research Team at Dorset Council³.

Table 1 over page shows the range of indicators provided by the Indices of Deprivation 2025. The main domains and supplementary indicators are provided in this report.

The data and maps presented in this document represent a summary of the information made available by the Ministry for Housing, Communities and Local Government (MHCLG) in its release of the Indices of Deprivation 2025.

The results for Dorset are also available as maps on Dorset Insight's website www.dorsetcouncil.gov.uk/statistics. This section of the website also includes maps and data presented at LSOA level for each of the **Sub Unitary Geography**⁴ (SUGs) areas in Dorset. The information available also includes the sub-domains listed below.

¹ October 30th, 2025

² Lower Super Output Areas are Census based geographies with an average population of 1,500 people.

³ performanceandresearch@dorsetcouncil.gov.uk

⁴ There are six Sub Unitary Geographies in Dorset. They have been produced to provide information at a level below Unitary but bigger than LSOA or Ward. More information available on Dorset Insight Website.

Table 1

Index of Multiple Deprivation (IMD)	
Main domains	Sub domains
Income	
Employment	
Health	
Education	Children/young people
	Skills
Barriers to Housing and Services	Wider Barriers
	Geographical Barriers
Crime	
Living Environment	Indoors
	Outdoors
Supplementary income indicators	
Income deprivation affecting children index	
Income deprivation affecting older people	

The Index of Deprivation 2025 – Dorset Council Results

Introduction

The Ministry of Housing, Communities and Local Government commissioned the Oxford Consultants for Social Inclusion (OCSI) from the Social Disadvantage Research Centre at the University of Oxford to update the Indices of Deprivation 2019 (ID 2019) for England. Following public consultation, and a significant programme of work by the research team the Indices of Deprivation 2025 (ID2019) have been produced using the same approach, structure and methodology used to create the ID2019.

The new Index of Multiple Deprivation 2025 (IMD 2025) is a Lower layer Super Output Area (LSOA) level measure of multiple deprivation and is made up of seven LSOA level domain indices. There are also two supplementary indices (Income Deprivation Affecting Children and Income Deprivation Affecting Older People) and a number of sub-domains. Summary measures of the IMD 2025 are presented at sub unitary authority level. The LSOA level Domain Indices and IMD 2025, together with the sub unitary authority summaries are referred to as the Indices of Deprivation 2025 (ID 2025).

The ID 2025 is based on the approach, structure and methodology that were used to create the previous ID 2019. The ID 2025 updates the ID 2019 using more up-to-date data and additional data sets. The new Index of Multiple Deprivation 2025 contains seven domains which relate to income deprivation, employment deprivation, health deprivation and disability, education skills and training deprivation, barriers to housing and services, living environment deprivation, and crime.

Area based measures

The area itself can be characterised as deprived *relative to other areas*, in a particular dimension of deprivation, on the basis of the proportion of people in the area experiencing the type of deprivation in question. In other words, the experience of the people in an area gives the area its deprivation characteristics. The area itself is *not* deprived, but the presence of a concentration of people experiencing deprivation in an area may give rise to a compounding deprivation effect – this is still *measured* by reference to those individuals.

Having attributed the aggregate of individual experience of deprivation to the area, it is possible to say that an area is deprived in that particular dimension. Once the specific dimensions of deprivation have been measured, these can be understood as elements of multiple deprivation.

The Concept of Multiple Deprivation

The IMD 2025 is a measure of multiple deprivation at the small area level. The model of multiple deprivation which underpins the IMD 2025 is based on the idea of distinct dimensions of deprivation which can be recognised and measured separately. These are experienced by individuals living in an area. People may be counted in one or more of the domains, depending on the number of types of deprivation that they experience. The overall IMD is conceptualised as a weighted area level aggregation of these specific dimensions of deprivation.

Domains and Indicators

Each of the seven Domains contains a number of component indicators. The criteria for inclusion of these indicators are that they should be 'domain specific' and appropriate for the purpose (as direct as possible measures of that form of deprivation); measuring major features of that deprivation (not conditions just experienced by a very small number of people or areas); up-to-date; capable of being updated on a regular basis; statistically robust; and available for the whole of England at a small area level in a consistent form.

Data Time Point, Spatial Scale and Denominators

Where possible, the indicators relate to 2019 to 2025, the IMD 2025 and component domains are presented at LSOA level. Summaries of the IMD 2025 are also presented at sub unitary geography level.

Denominators at LSOA level for 2025 were provided by the Office for National Statistics' Small Area Population Estimation Unit. For the few indicators where numerators were derived from the 2021 Census, the denominators were also drawn from the Census.

The Domains

Income Deprivation Domain

A major change to the policy and data landscapes since the IoD 2019 relates to the roll out of Universal Credit (UC) as the principal means tested benefit for people of working age.

The purpose of this domain is to capture the proportion of the population experiencing income deprivation in an area.

- Adults and children in Income Support benefit units.
- Adults and children in Income-Based Jobseeker's Allowance benefit units.
- Adults and children in Income-Based Employment and Support Allowance benefit units.
- Adults and children in Pension Credit (Guarantee) benefit units.
- Adults and children in Universal Credit benefit units 'out of work' conditionality categories:
 - No work requirements
 - Planning for Work
 - Preparing for work

- o Searching for work
- Adults and children in Universal Credit ‘in-work’ conditionality groups with monthly equivalised income below 70% of the national median (after housing costs):
 - o Working with requirements
 - o Working – no requirements
- Adults and children in Housing Benefit claimant benefit units with monthly equivalised income below 70% of the national median (after housing costs).
- Adults and Children in Tax Credit benefit units with monthly equivalised income below 70% of the national median (after housing costs).
- Asylum seeker adults and children in dispersed accommodation in receipt of support.

In addition, an Income Deprivation Affecting Children Index (IDACI) and an Income Deprivation Affecting Older People Index (IDAOPI) were created, respectively representing the proportion of children aged 0-15 years old, and people aged 60 and over, living in income deprived households.

Employment Deprivation Domain

The Employment Deprivation Domain measures the proportion of the ‘working age’ population in an area that are involuntarily excluded from the labour market. This includes people who would like to work but are unable to do so due to unemployment, sickness or disability, or caring responsibilities. A combined count of employment deprived individuals per LSOA is calculated by summing the number of working age claimants of the following six non-overlapping indicators:

- Claimants of Jobseeker’s Allowance (both contribution-based and income-based).
- Claimants of Employment and Support Allowance (both contribution-based and income-based).
- Claimants of Incapacity Benefit.
- Claimants of Severe Disablement Allowance.
- Claimants of Carer’s Allowance.
- Claimants of New Style Jobseeker’s Allowance.
- Claimants of New Style Employment and Support Allowance.
- Claimants of Income Support.
- Claimants of Universal Credit in ‘no work requirements’ conditionality group.
- Claimants of Universal Credit in ‘searching for work’ conditionality group.
- Claimants of Universal Credit in ‘planning for work’ conditionality group.
- Claimants of Universal Credit in ‘preparing for work’ conditionality group.

Health Deprivation and Disability Domain

The Health Deprivation and Disability Domain measure the risk of premature death and the impairment of quality of life through poor physical or mental health. The domain measures morbidity, disability, and premature mortality, but not aspects of behaviour or environment that may be predictive of future health deprivation.

- Comparative Illness and Disability Ratio: an age and sex standardised ratio of people receiving Disability Living Allowance (DLA), Employment and Support Allowance (ESA), Attendance Allowance (AA), Industrial Injuries Disablement Benefit/ Reduced Earnings Allowance/ Retirement Allowance, Incapacity Benefit (IB), Severe Disablement Allowance (SDA), Personal Independence Payment (PIP) and Universal Credit (UC) Health Caseload.
- Years of Potential Life Lost: an age and sex standardised rate of 'premature death,' defined as death before the age of 75 from any cause.
- Acute Morbidity: an age and sex standardised rate of hospital spells starting with an admission in an emergency and lasting more than one calendar day.
- Mental health sub-component 1: Suicide: a rate of deaths coded as intentional.
- Mental health sub-component 2: Hospital admissions: a rate of hospital admissions related to mental health.
- Mental health sub-component 3: Prescribing data: a rate of patients prescribed pharmaceuticals for mental ill-health.
- Mental health sub-component 4: Health benefits: the number of residents claiming Personal Independence Payments (PIP) and Disability Living Allowance (DLA) in disease groupings associated with mental health or behavioural disorders as a proportion of the total population aged 0-66.

Education, Skills and Training Deprivation Domain

The Education, Skills and Training Domain measures the lack of attainment and skills in the local population. The indicators fall into two sub-domains: one relating to children and young people and one relating to adult skills.

These two sub-domains are designed to reflect the 'flow' and 'stock' of educational disadvantage within an area, respectively. That is, the 'children and young people' sub-domain measures the attainment of qualifications and associated measures ('flow'), while the 'skills' sub-domain measures the lack of qualifications in the resident working age adult population ('stock').

Children and Young People sub-domain

- Key Stage 2 attainment: The scaled score of pupils taking Mathematics, English reading and English grammar, punctuation and spelling Key Stage 2 exams.
- Key Stage 4 attainment: The average capped points score of pupils taking Key Stage 4 (GCSE or equivalent) exams.
- Entry to higher education: A measure of young people aged under 21 not entering higher education.
- Pupil absence: The proportion of authorised and unauthorised absences for pupils attending maintained Primary, Secondary and Special Schools
- Persistent pupil absence: The proportion of pupils missing 10% or more of possible school sessions.

Adult Skills sub-domain

The Adult Skills sub-domain is a non-overlapping count of two indicators:

- Adult skills: The proportion of adults aged 25 to 66 with no or low qualifications, or who cannot speak English or cannot speak English well.

Barriers to Housing and Services Domain

Barriers to Housing and Services Domain

The Barriers to Housing and Services Domain measures the physical and financial accessibility of housing and local services. The indicators fall into two sub-domains: 'geographical barriers,' which relates to the geographical (in)accessibility of key local services and amenities; and 'wider barriers' which relates to broader issues of accessibility, such to access to affordable housing and other important services.

Geographical Barriers sub-domain

- Connectivity Score: Travel time to retail, education, health, employment, and leisure/entertainment destinations by walking, cycling and public transport.

Wider Barriers sub-domain

- Housing affordability: Difficulty of access to owner-occupation or the private rental market, expressed as the inability to afford to enter owner-occupation or the private rental market.
- Household overcrowding: The proportion of households judged to have insufficient space to meet the household's needs.
- Statutory Homelessness: A Local Authority District level indicator expressed as the rate of acceptances for housing assistance under the homelessness provisions of housing legislation.

- Core Homelessness: A Local Authority District level indicator capturing households experiencing the most extreme and immediate forms of homelessness.
- Broadband speed: Average broadband upload and download line speed (Mbit/s)
- Patient-to-GP ratio: Patient to GP ratio by GP surgery, allocated to LSOA level based on patient residence distributions.

Crime Domain

Crime is an important feature of deprivation that has major effects on individuals and communities. The Crime Domain measures the risk of personal and material victimisation at local level using eight indicators:

- Violence with injury, rate per 1,000 at risk population
- Violence without injury, rate per 1,000 at risk population
- Stalking and harassment, rate per 1,000 at risk population
- Burglary, rate per 1,000 at risk properties
- Theft, rate per 1,000 at risk population
- Criminal damage, rate per 1,000 at risk population
- Public order and possession of weapons, rate per 1,000 at risk population
- Anti-social behaviour, rate per 1,000 at risk population.

Living Environment Deprivation Domain

The Living Environment Deprivation Domain measures the quality of the local environment. The indicators fall into two sub-domains. The 'indoors' living environment measures the quality of the home environment, while the 'outdoors' living environment measures quality outside the home in the local neighbourhood.

Indoors sub-domain

- Housing in poor condition: The proportion of social and private homes that fail to meet three components of the Decent Homes standard.
- Housing Energy Performance Score: A measure reflecting housing quality derived from the Energy Performance Certificate (EPC) data collated by MHCLG.
- Housing lacking private outdoor space: A measuring reflecting the presence of private outdoor space, derived from data provided by Ordnance Survey (OS) and the Office for National Statistics (ONS).

Outdoors sub-domain

- Air quality: A measure of air quality based on emissions rates for four pollutants.
- Road traffic accidents: a severity-weighted indicator reflecting the risk of casualties involving injury to pedestrians or cyclists.
- Noise pollution: The percentage of the population exposed to noise pollution greater than or equal to 55dB.

Outputs

1. Each of the 33,755 LSOAs in England has been assigned a score and rank for the IMD 2015; the seven domain indices; the sub-domains; and the two supplementary indices (Income Deprivation Affecting Children and Income Deprivation Affecting Older People).
2. For this report, each LSOA in Dorset is given a national rank.

A look at the results for Dorset

Index of Multiple Deprivation

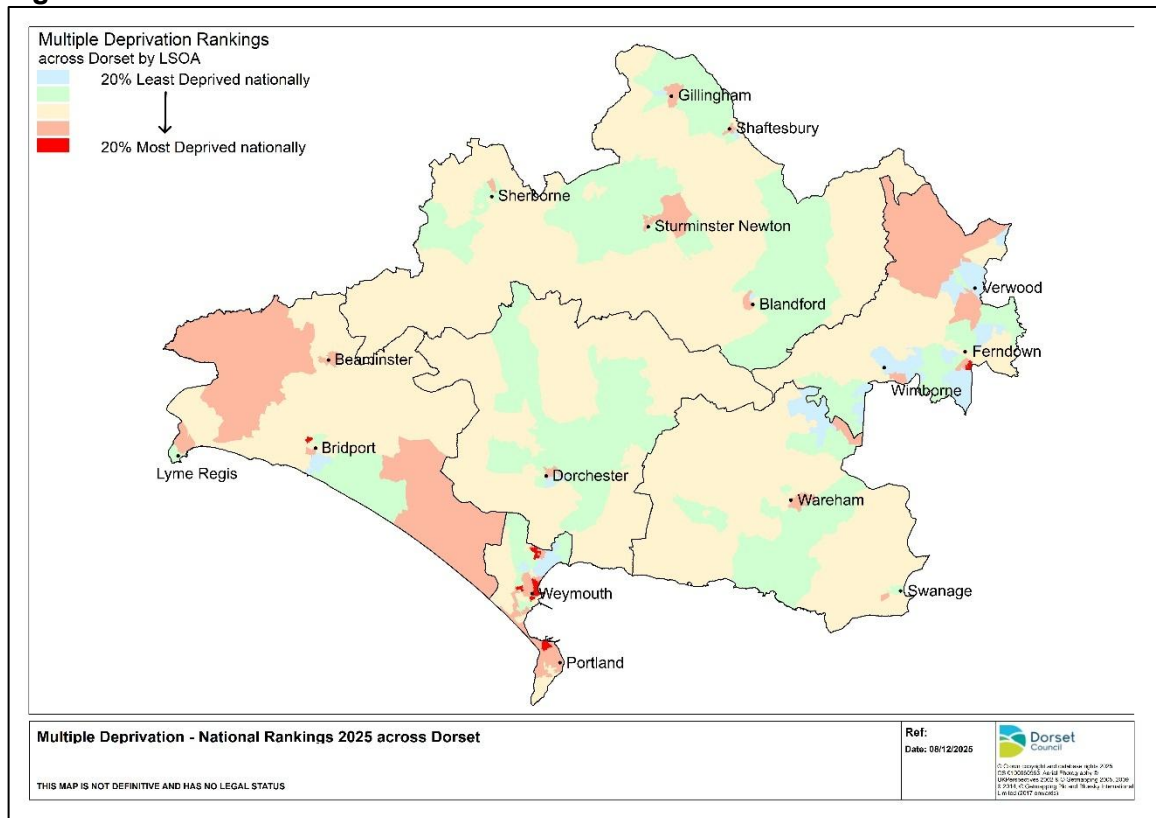
The IMD 2025 is a measure of multiple deprivation at the small area level. The model of multiple deprivation which underpins the IMD 2025 is based on the idea of distinct dimensions of deprivation which can be recognised and measured separately. These are experienced by individuals living in an area. People may be counted in one or more of the domains, depending on the number of types of deprivation that they experience. The overall IMD is conceptualised as a weighted area level aggregation of these specific dimensions of deprivation. The maps for each area include the boundaries for Sub Unitary Geographies as the Districts no longer exist.

There are nine areas in Dorset Council that are within the top 20% most deprived nationally for multiple deprivation. Seven of them are within Dorset South SUG area one from Dorset West SUG area and one from Dorset East SUG area. There are five areas within the top 10% nationally all within Dorset South SUG. Melcombe Regis Town Centre and Littlemoor West are the most deprived (see Table 2 and Figure 1).

Table 2 – Top 20% IMD National

Isoa21cd	LSOA_name	IMD	IMD_Decile
E01020552	Littlemoor West	1056	1
E01020569	Fortuneswell North	1985	1
E01020555	Melcombe Regis Park District	2172	1
E01020554	Melcombe Regis Town Centre	2720	1
E01020575	Westham North Westhaven	2967	1
E01020582	Rodwell and Chapelhay	3739	2
E01020553	Melcombe Regis Carlton Road	4805	2
E01020499	Bridport Court Orchard	5560	2
E01020393	Ferndown Tricketts Cross East	6662	2

Figure 1



Income Deprivation

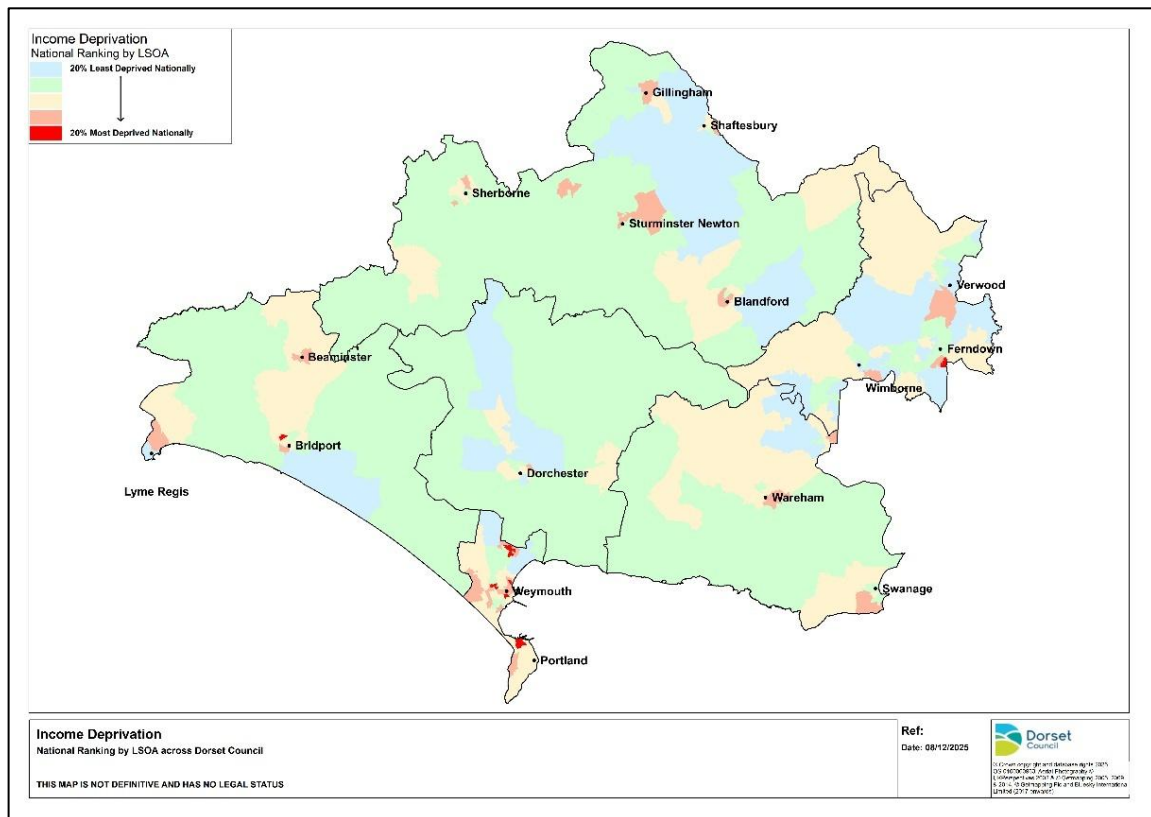
The purpose of this domain is to capture the proportion of the population experiencing income deprivation in an area.

Seven areas in Dorset fall into the top 20% most deprived nationally for income deprivation (see Table 3 and Figure 2). Five of those are within Dorset South SUG area. Littlemoor West, Fortuneswell North, Westham North Westhaven, Rodwell and Chapelhay and Melcombe Regis Park District. The first three are within the top 10% nationally. Outside of Weymouth and Portland, Bridport Court Orchard in Dorset West and Ferndown Trickett's Cross East in Dorset East SUG area are also represented in the top 20% most deprived.

Table 3 – Top 20% Most deprived nationally Income Deprivation

Isoa21cd	LSOA_name	Income_Decile
E01020552	Littlemoor West	1
E01020569	Fortuneswell North	1
E01020575	Westham North Westhaven	1
E01020499	Bridport Court Orchard	2
E01020393	Ferndown Tricketts Cross East	2
E01020582	Rodwell and Chapelhay	2
E01020555	Melcombe Regis Park District	2

Figure 2



St. Leonard's & St. Ives West and Colehill The Vineries in Dorset East SUG are the least deprived LSOAs in the Dorset Council area in relation to this domain. Dorset East SUG area has the greatest proportion of areas within the least deprived 20%.

Employment Deprivation Domain

This domain measures employment deprivation conceptualised as involuntary exclusion of the working age population from the labour market.

Twelve LSOAs in the Dorset Council area fall into the top 20% most deprived nationally for employment deprivation (see Table 4 and Figure 3). Eight of these areas are within Dorset South SUG area, three in Dorset West SUG area and one Dorset East. The top five of these areas are in former borough of Weymouth and Portland.

Table 4 – Top 20% most deprived nationally Employment Deprivation

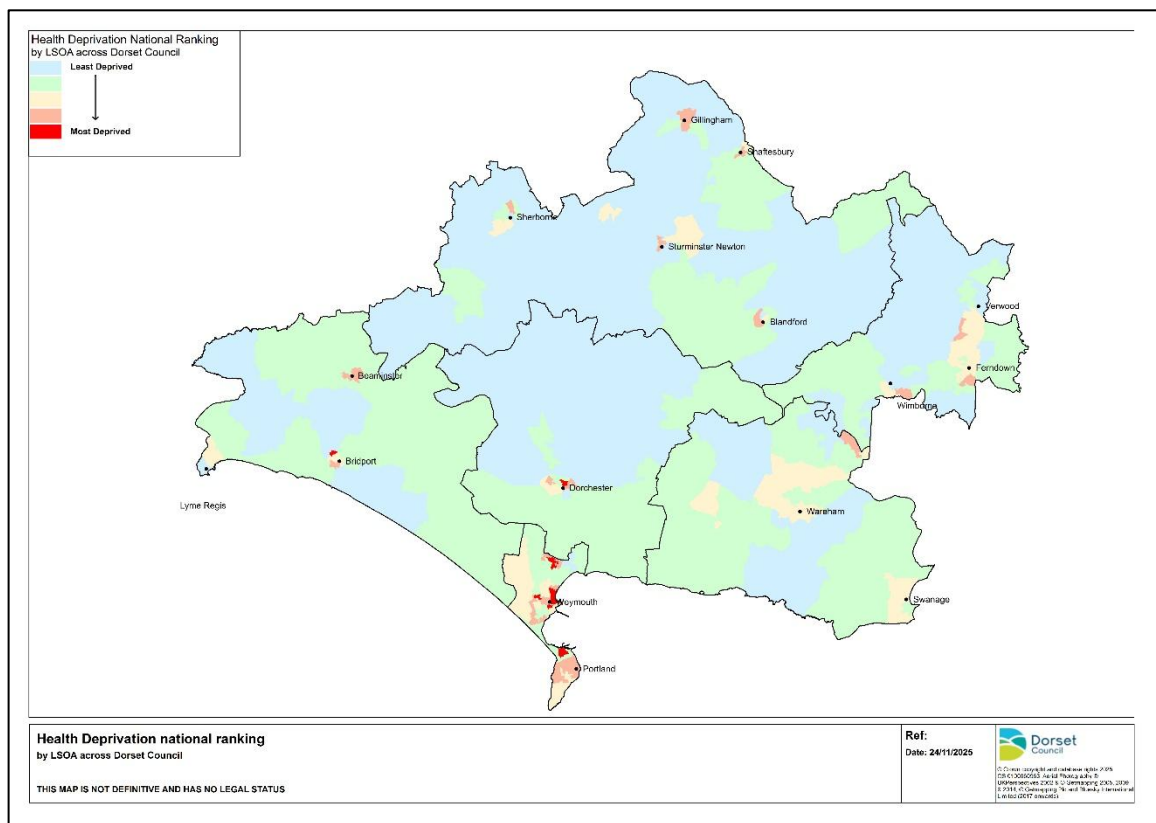
LSOA_name	Employment_Decile
Littlemoor West	1
Fortuneswell North	1
Westham North Westhaven	1
Rodwell and Chapelhay	1
Melcombe Regis Park District	1
Bridport Court Orchard	2
Melcombe Regis Town Centre	2
Bridport Skilling	2
Melcombe Regis Carlton Road	2
Westham East Knightsdale Road	2
Beaminster South	2
Ferndown Tricketts Cross	2

Thirty-six areas fall into the top 20% least deprived areas nationally; these are again dominated by Dorset East SUG area. The Lower Tarrant and Army Camp in Dorset North SUG is the least deprived area of the county for Employment Deprivation followed by Colehill Cannon Hill in Dorset East SUG.

Table 5 Top 20% most deprived nationally Health Deprivation

LSOA_name	Health_Decile
Littlemoor West	1
Melcombe Regis Park District	1
Fortuneswell North	1
Melcombe Regis Carlton Road	2
Melcombe Regis Town Centre	2
Westham North Westhaven	2
Rodwell and Chapelhay	2
Dorchester Town Centre	2
Bridport Court Orchard	2

Figure 4



Education, Skills and Training Deprivation Domain

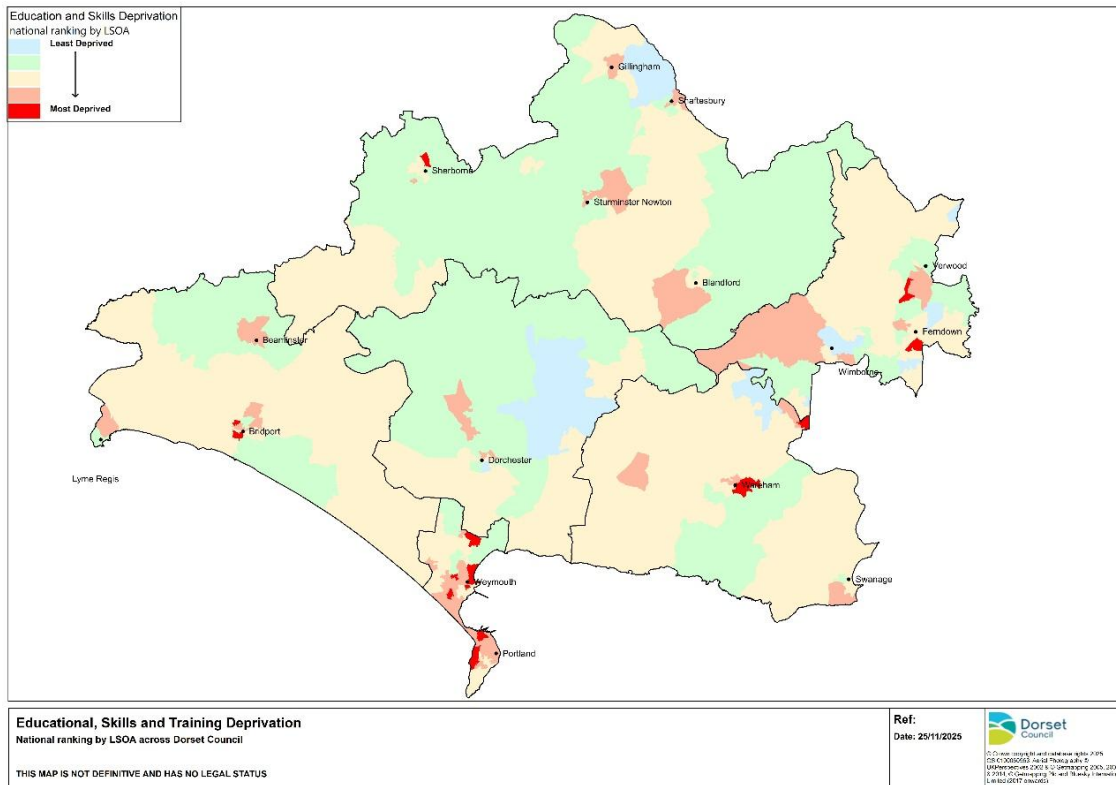
This domain captures the extent of deprivation in terms of education, skills and training in a local area. The indicators are structured into two sub domains: one relating to education deprivation for children/young people in the area, and one relating to lack of skills and qualifications among a sub-set of the working age adult population.

Nineteen areas in Dorset fall into the top 20% most deprived nationally for education deprivation (see Table 6 and Figure 5). The most deprived area in the county for Education Deprivation is Littlemoor West in Dorset South followed by Fortuneswell North also in Dorset South, in fact the top six areas for Educational Deprivation are all in Dorset South and are all with the top 10% most deprived nationally.

Table 6 Top 20% most deprived nationally Education Deprivation

LSOA_name	Education_Decile
Littlemoor West	1
Fortuneswell North	1
Melcombe Regis Park District	1
Westham North Westhaven	1
Rodwell and Chapelhay	1
Melcombe Regis Town Centre	1
Bridport Skilling	2
Bridport Court Orchard	2
Upton Wood	2
Weston West	2
Melcombe Regis Carlton Road	2
Littlemoor East	2
Melcombe Regis Lodmoor Hill	2
Ferndown Tricketts Cross East	2
Three Legged Cross	2
Sherborne East Gryphon	2
Wyke Square	2
Ferndown Tricketts Cross	2
Wareham Town	2

Figure 5



Fourteen areas in the county are within the 20% least deprived for Education Deprivation. The least deprived in the county is Dorchester Manor Park in the Mid Dorset SUG area followed by Colehill Cannon Hill in the Dorset East SUG area.

Barriers to Housing and Services Domain

The purpose of this domain is to measure barriers to housing and key local services.

This is a significant area of deprivation for Dorset. Eighty-eight areas are within the top 20% most deprived nationally (see Figure 6). This high number reflects the rurality and lack of public transport in parts of the county and more specifically the greater distance from services, which makes up a significant proportion of this domain. Dorset North, Dorset West have some of the most deprived areas for this domain (see Table 7). The most deprived area in the county is Dorset West Frome Valley followed by Chesil Bank also in Dorset West. These three areas fall into the top 1% most deprived nationally.

Crime Domain

This domain measures the rate of recorded crime for four major crime types, representing the risk of personal and material victimisation at a small area level. The eight major crime types covered are:

- Violence with injury, rate per 1,000 at risk population
- Violence without injury, rate per 1,000 at risk population
- Stalking and harassment, rate per 1,000 at risk population
- Burglary, rate per 1,000 at risk properties
- Theft, rate per 1,000 at risk population
- Criminal damage, rate per 1,000 at risk population
- Public order and possession of weapons, rate per 1,000 at risk population
- Anti-social behaviour, rate per 1,000 at risk population.

Seven areas in Dorset fall into the top 20% most deprived nationally for crime (see Table 8 and Figure 7). All these areas are within Weymouth or Portland in Dorset South. The most deprived in Dorset is Melcombe Regis Town Centre which is within the top 1% nationally for Crime deprivation.

Table 8 – Top 20% most deprived nationally Crime Deprivation

LSOA_name	Crime Decile (where 1 is most deprived 10% of LSOAs)
Melcombe Regis Town Centre	1
Melcombe Regis Park District	1
Melcombe Regis Carlton Road	1
Littlemoor West	1
Westham East Knightsdale Road	2
Fortuneswell North	2
Rodwell and Chapelhay	2

The Living Environment Deprivation Domain

This domain focuses on deprivation with respect to the characteristics of the living environment. It comprises two sub-domains: the 'indoors' living environment which measures the quality of housing, and the 'outdoors' living environment which contains three measures about air quality, noise pollution, and road traffic accidents.

Thirty-six areas fall into the top 20% most deprived nationally for this indicator and twenty in the top 10% most deprived (see Table 9 and Figure 8). The most deprived in the county is Allen Valley (Dorset East SUG) which falls into the top 1% nationally for deprivation.

Table 9

LSOA_name	Living Environment Decile (where 1 is most deprived 10% of LSOAs)
Allen Valley	1
Marshwood Vale	1
Broadwindsor	1
Chesil Bank	1
Crane	1
Halstock	1
Milton Abbas & Hilton	1
Sixpenny Handley	1
Maiden Newton	1
Queen Thorne	1
The Iwerne	1
Melcombe Regis Town Centre	1
Winfrith	1
Beaminster Environs	1
Bourton & District	1
West Purbeck	1
Melcombe Regis Park District	1
Piddle Valley	1
The Beacon	1
Fortuneswell South	1
Castle	2
Loders	2
Holt	2
Frome Valley	2
Netherbury	2
Cam Vale	2
The Stours	2
Yetminster	2
Pamphill & Shapwick	2
Lydden Vale	2
Cerne Valley	2
Sherborne West Abbey	2
Swanage Town Centre	2
Bradford Abbas	2
Lyme Regis West	2
Chideock & Symondsburry	2

Supplementary Indices – Income Deprivation affecting Children Index (IDACI) and Income Deprivation affecting Older People Index IDAOPI

Income Deprivation affecting Children Index (IDACI)

As in the ID2019, a supplementary index – Income Deprivation Affecting Children Index– has been produced alongside the Income Deprivation Domain. This covers only children aged 0-15 living in income deprived households. The Income Deprivation Affecting Children Index is expressed as the proportion of all children aged 0-15 living in income deprived families.

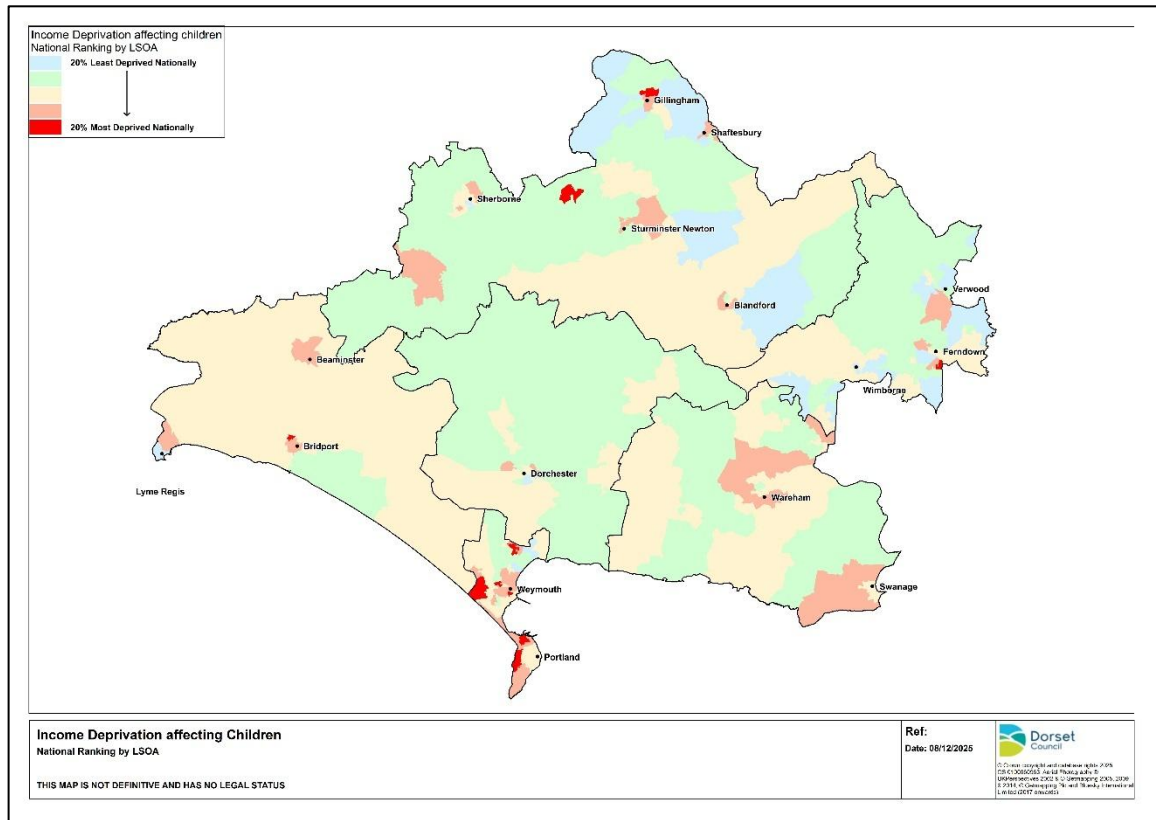
Ten areas in Dorset fall into the top 20% most deprived nationally for this indicator (See Table 10 and Figure 9). Six of these are within Dorset South SUG area, one in Dorset West SUG area, two in Dorset North and one in Dorset East. Please note that the top area ‘Charlestown’ has been investigated as the ranking is vastly different than from 2019 this has been checked with MHCLG who were not able to give a suitable reason and it should therefore be considered an error.

Table 10

LSOA name (2021)	Income Deprivation Affecting Children Index (IDACI) Decile (where 1 is most deprived 10% of LSOAs)
Charlestown	1
Fortuneswell North	1
Rodwell and Chapelhay	1
Littlemoor West	2
Westham North Westhaven	2
Bridport Court Orchard	2
Weston West	2
Gillingham Lodborne	2
Stalbridge Town	2
Ferndown Tricketts Cross East	2

Thirty-four areas fall into the 20% least deprived nationally for this deprivation indicator. The least deprived in the council area is the Iwernes in Dorset North SUG area, followed by Motcombe also in North Dorset SUG. Dorset East dominates the 20% least deprived nationally with well over half the areas coming from this SUG area.

Figure 9



Income Deprivation affecting Older People Index IDAOPI

A second supplementary index, also produced in 2019, is the Income Deprivation Affecting Older People Index. This index represents income deprivation affecting older people, expressed as the proportion of adults aged sixty or over living in Income Support or income-based Jobseeker’s Allowance or Pension Credit (Guarantee) families.

Three areas in Dorset fall into the top 20% most deprived nationally for this indicator (see Table 11 and Figure 10). Two of these areas are in Dorset South - Littlemoor West and Westham North Westhaven and one in Dorset West – Bridport Court Orchard.

The results for Dorset are also available as maps on the research and insight's website <https://www.dorsetcouncil.gov.uk/statistics>. This section of the website also includes maps and data presented at LSOA level for each of the County's six sub unitary geographies and a bitesize headline bulletin. The information available also includes the sub-domains listed at the front of this document.